



NOTICE OF MEETING

LAS VEGAS WASH COORDINATION COMMITTEE Tuesday, October 26, 2021 8:30 a.m.

**MEETING TO BE HELD VIRTUALLY VIA MICROSOFT TEAMS
Call-in Information: 1-323-776-6758 ID: 295-554-34#**

The Las Vegas Wash Coordination Committee makes reasonable efforts to assist and accommodate persons with physical disabilities who desire to attend the meeting. For assistance, please contact Keiba Crear at (702) 822-3388 at least 48 hours in advance of the meeting.

Visit our website at www.lvwash.org for Las Vegas Wash Coordination Committee agenda postings, copies of supporting material and approved minutes. To receive meeting information, including supporting material, contact the Agenda Coordinator at (702) 258-3277 or agendas@snwa.com.

This meeting will be held via remote technology only pursuant to NRS 241.023, as amended by assembly bill 253 of the 81st legislative session, effective May 31, 2021. There will be no physical location for the meeting. Members of the public may hear, observe and participate in the meeting via the meeting link or telephone number identified above. If a member of the public is interested in viewing this meeting online or providing public comment, please e-mail jason.bailey@lvvwd.com no later than 5 p.m. on October 25, 2021 to receive remote access.

Any Committee member may combine two or more agenda items for consideration, consider an item out of order, remove an item from the agenda or delay discussions relating to an item on the agenda at any time.

COMMENTS BY THE GENERAL PUBLIC

No Action May Be Taken: This is a period devoted to comments by the general public pertaining to items on this agenda. If you wish to speak to the Committee about items within its jurisdiction, but not appearing on this agenda, you must wait until the "Comments by the General Public" period listed at the end of this agenda. Please limit your comments to three minutes or less. No action may be taken upon a matter not listed on the posted agenda.

ITEM NO.

- I. *For Information Only:* Welcome/Call to Order
- II. *For Information Only:* Introductions
- III. *For Possible Action:* Approve April 27, 2021 Meeting Summary
- IV. *For Information Only:* Receive Presentation on Lake Las Vegas
- V. *For Information Only:* Receive Update on Recent Activities
 - a. Las Vegas Wash Project Coordination Team
 - b. Clark County Wetlands Park
 - c. Lake Mead
 - d. Las Vegas Valley Watershed Advisory Committee
 - e. Emerging Issues
- VI. *For Possible Action:* Set Next Meeting Date/Time and Propose Items for the Next Meeting's Agenda

COMMENTS BY THE GENERAL PUBLIC

No Action May Be Taken: At this time, the Committee will hear general comments from the public on matters under the jurisdiction of the Las Vegas Wash Coordination Committee. Please limit your comments to three minutes or less.

THIS MEETING HAS BEEN PROPERLY NOTICED AND POSTED IN THE FOLLOWING LOCATIONS:

City of Boulder City, City Hall
401 California Avenue
Boulder City, NV 89005

City of North Las Vegas, City Hall
2250 Las Vegas Boulevard North
North Las Vegas, NV 89030

City of Henderson, City Hall
240 Water Street
Henderson, NV 89015

Clark County Government Center
500 S. Grand Central Parkway
Las Vegas, NV 89106

Las Vegas Valley Water District
1001 S. Valley View Boulevard
Las Vegas, NV 89153

Southern Nevada Water Authority
100 City Parkway, Ste. 700
Las Vegas, NV 89106

Clark County Water Reclamation District
5857 E. Flamingo Road
Las Vegas, NV 89122

City of Las Vegas, City Hall
495 S. Main Street
Las Vegas, NV 89106





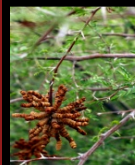
Las Vegas Wash Coordination Committee Environmental Resources and Outreach Update

October 26, 2021



October 2021

www.lvwash.org



Las Vegas Wash Wildlife Mgt Plan Annual Update - 2021

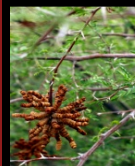
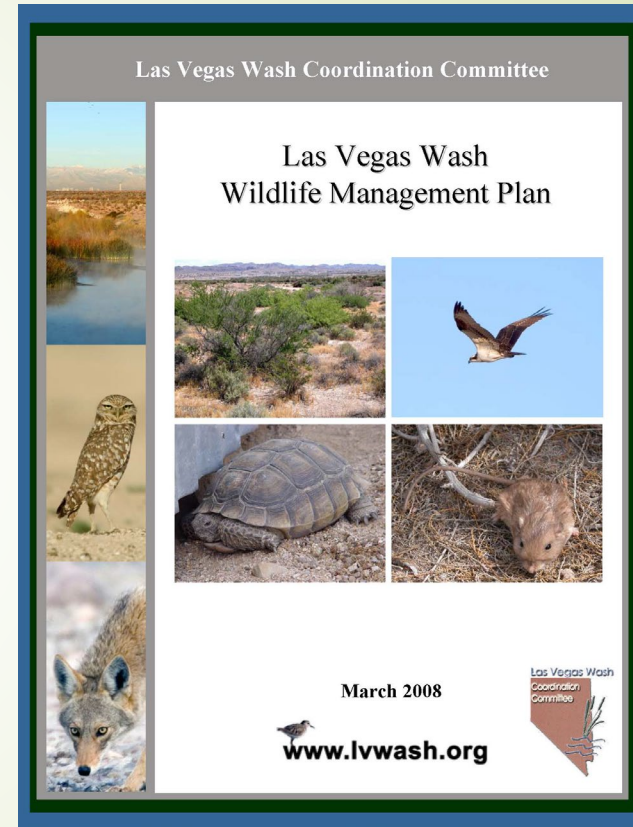
Developed from 2005 to 2008

Three management objectives

- Conserve native species
- Protect & enhance their habitats
- Increase environmental awareness of these resources in the community

31 recommended actions (RAs) to achieve objectives

- Also includes baseline & effectiveness monitoring



Las Vegas Wash Wildlife Mgt Plan Annual Update - 2021

Recent Accomplishments

Conserving Native Species

- Night Snake and Amphibian Surveys

Protecting and Enhancing Habitats

- Conserve and incorporate remnant native plant communities into revegetation efforts where possible

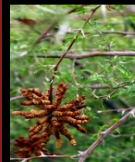
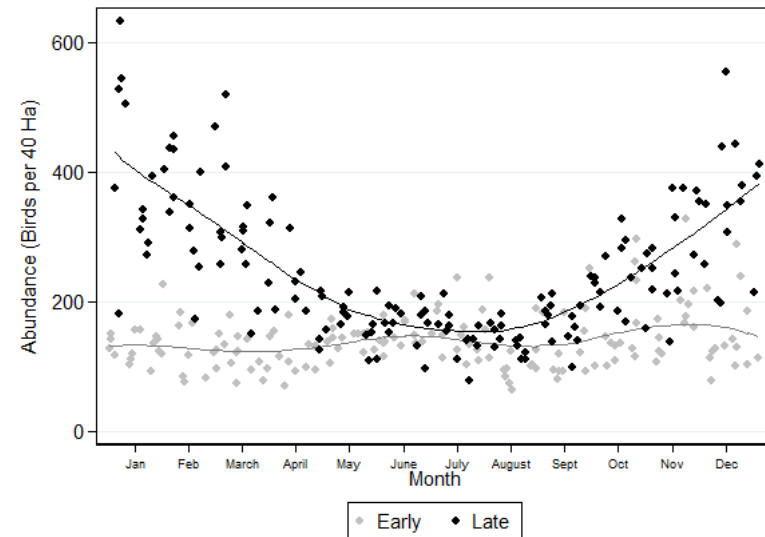
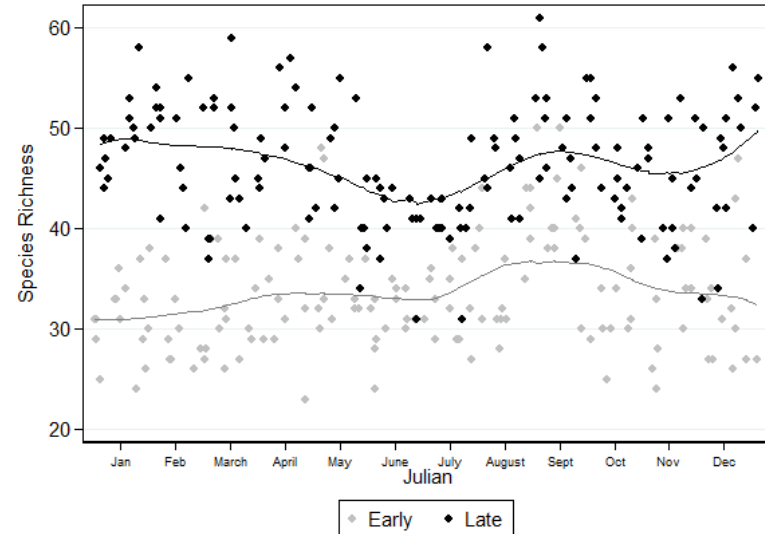
Increase environmental awareness of these resources in the community

- Created outreach videos for elementary and secondary school programs with a grant from NDEP



Bird Surveys

- Biweekly avian point counts continue
- GBBO contracted to conduct surveys
 - 173 species detected in 2020/21 study year (Sep-Aug)
 - ~245 species detected since study began in 2005
- 2005-20 GBBO report documents significant increases in richness and abundance
 - Figures also show seasonal changes in # of species and individuals detected in the early (2005-11) versus late (2014-20) period

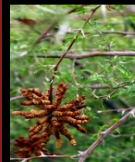


T&E Bird Surveys

- **Marsh birds/Yuma Ridgway's rail, April-May**
 - Record population reported:
 - 1 upstream of Upper Narrows Weir
 - 4 at Mitigation Wetlands
 - 1 on Lower Wash
 - >1 had never been confirmed previously
- **Southwestern willow flycatcher, mid-May-July**
 - 1 territory (1st since 2013)
- **Yellow-billed cuckoo, mid-June-August**
 - 3 detections: 1 at Pabco and 2 at NP



2021 southwestern willow flycatcher banded by SWCA



Herpetofauna Surveys

➤ Baseline Night Snake Survey

➤ Species identified

- Sidewinder*
- Gopher snake
- Desert nightsnake*
- Speckled rattlesnake†

➤ Amphibian Survey

➤ Same species as 2002-2003

- American bullfrog
- Woodhouse's toad

➤ Both surveys concluded this month



Desert nightsnake



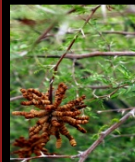
Sidewinder



American bullfrog



Woodhouse's toad

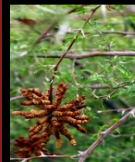


Selenium Standard - Fish Collection

- CCRFCD leading effort to create site-specific Se standard for the Wash
- Current proposed standard would likely make Wash and tributaries out of compliance
- Wash Team collecting carp and green sunfish for analysis to determine Se concentrations in tissue
- 15 carp and 1 green sunfish have been collected along the Wash and 15 carp from the Nature Preserve
- Samples have been sent to lab for analysis



Common Carp



Invasive Weed Management

- SNWA's contractor Soil-Tech is currently removing non-native weeds from recently planted revegetation sites
- Annual vegetation monitoring will identify where upcoming efforts will be focused



October 2021

www.lvwash.org

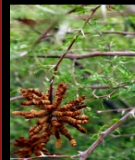


Revegetation



Desert Milkweed

- More than 580 acres have been revegetated to date
- 2020 vegetation monitoring report being drafted
- 2021 vegetation monitoring has concluded
- Long-term revegetation management plan to start implementation in FY22-23
 - Additional plantings
 - Enhancements for wildlife



Wash Green-Ups

➤ Spring 2021 (5/1)

- Sunrise Mtn. South
- 9 acres
- 139 volunteers
- 2,500 plants

➤ Fall 2021 (10/23)

- Sunrise Mtn. South
- 12 acres
- 250-300 volunteers
- 5,000 plants

➤ To date:

- Over 13,000 volunteers
- Over 310 acres
- Over 145,000 plants

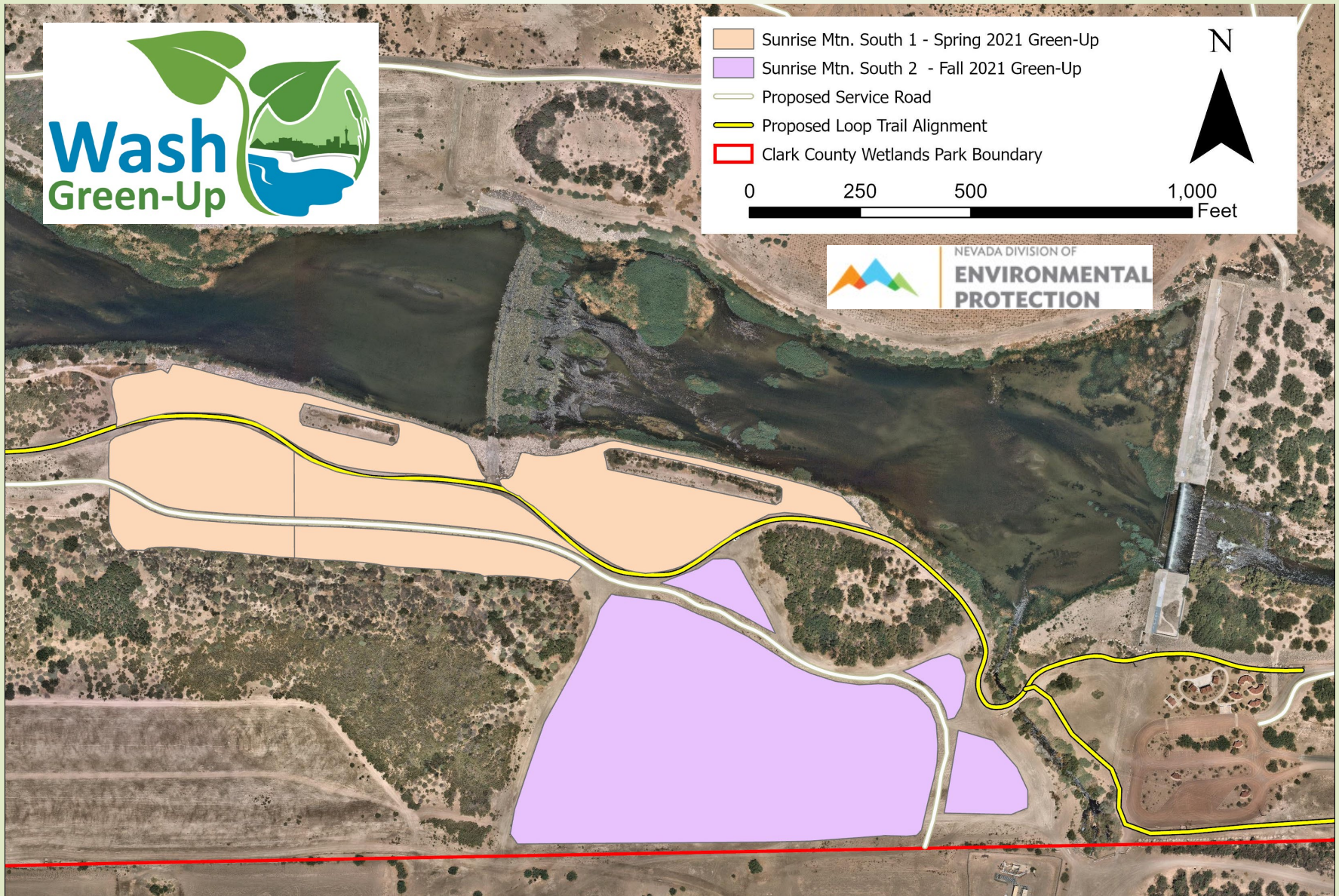


October 2021

www.lvwash.org



2021 Wash Green-Up Sites



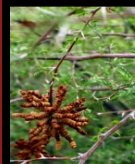
Grants

Bureau of Reclamation

- \$150,000 in obligated funding for FY21
- Revegetation, water quality monitoring,

Nevada Division of Environmental Protection

- \$67,500 for FY 21-22
 - Mabel Hoggard classroom and field trips
 - Wash Green-Ups (+ plants and irrigation)



Completed Outreach

Stormwater Pollution Poster Contest

41 Schools
910 Students
59 Posters Submitted

Las Vegas Wash Virtual Education Experience

54 Schools
1,644 Students
387 students completed the
questionnaire that went along
with the videos

March 2021

Marc Kahre E.S. Reading Week – 50 Students

May 2021

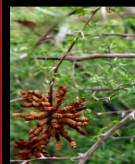
Kesterson ES Career Day – 94 Students

Spring Green-Up – 154 volunteers



October 2021

www.lvwash.org



Upcoming Outreach

Mabel Hoggard

- Working with teachers on the possibility of field trips this school year
- If not possible, we will repeat the virtual options of last year
 - Las Vegas Wash videos
 - Available on SNWA YouTube Channel

Green Valley Christian School

- February 2-3

Allegiant Stadium Staff Volunteer Planting

- 500 plants at Sunrise Mountain Weir
- October 11

World Wetlands Day

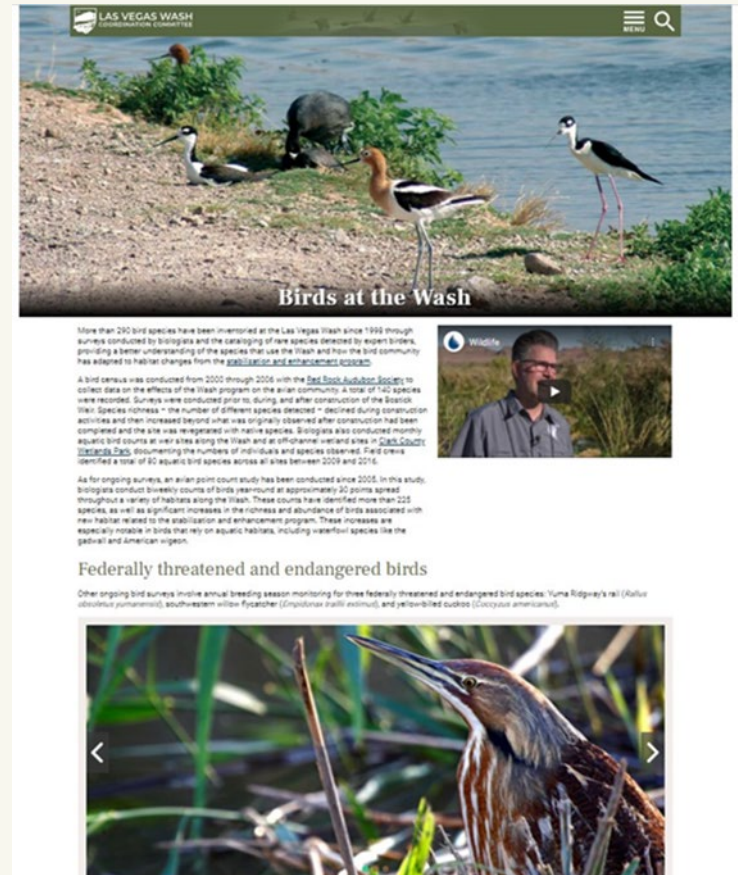
- February 2-3
- Working with interested teachers



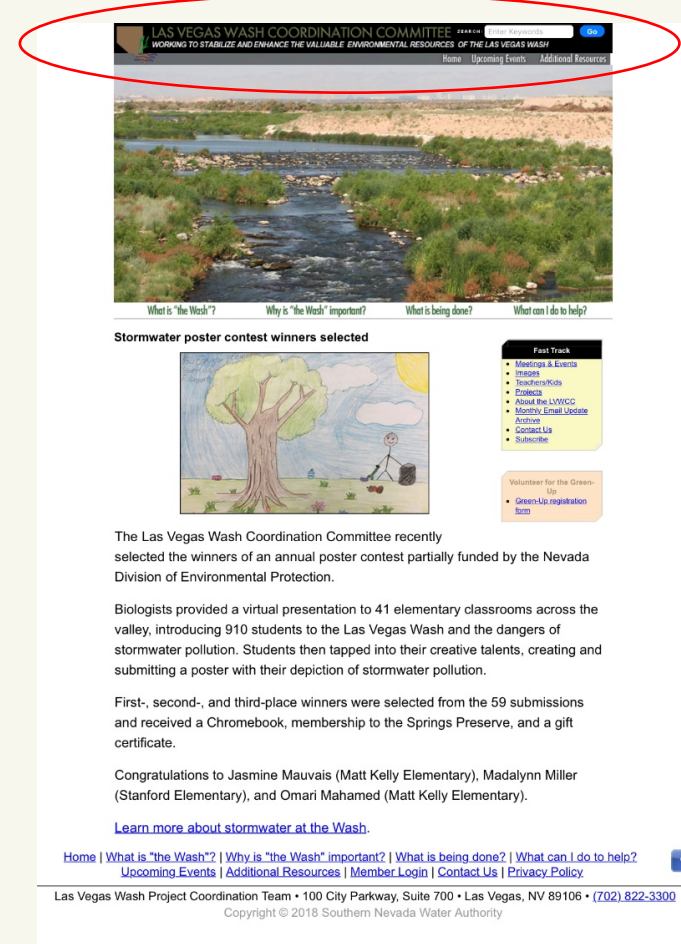
LVWASH.ORG WEBSITE REDESIGN

The new site:

- Launched October 11
- Has a modern design
- Is mobile friendly
- Utilizes new technology to display information
- Improves user experience
- Better exhibits photos and videos



LOGO REDESIGN



New website required
new logo design

- Original in use for more than 20 years!
- Dated look
- Not mobile friendly

NEW BANNER LOGO



LAS VEGAS WASH
COORDINATION COMMITTEE



LAS VEGAS WASH
COORDINATION COMMITTEE

LAS VEGAS WASH
COORDINATION COMMITTEE



Stormwater poster contest winners selected

The Las Vegas Wash Coordination Committee recently selected the winners of an annual poster contest partially funded by the Nevada Division of Environmental Protection.

Biologists provided a virtual presentation to 41 elementary classrooms across the valley, introducing 910 students to the Las Vegas Wash and the dangers of stormwater pollution. Students then tapped into their creative talents, creating and submitting a poster with their depiction of stormwater pollution.

First, second, and third-place winners were selected from the 59 submissions and received a Chromebook, membership to the Springs Preserve, and a gift certificate.

Where to go at the Las Vegas Wash

Clark County Wetlands Park

- 210-acre Nature Preserve
- Miles of trails for walking, biking, bird watching and more
- Nature Center with 10,000 square feet of interactive displays, artwork and activities

[Get Directions](#)

Henderson Bird Viewing Preserve

- Home to thousands of migratory and resident desert birds
- Nine ponds available for birding
- 3/4-mile long trail accessible by wheelchair

[Get Directions](#)

Ideal for:

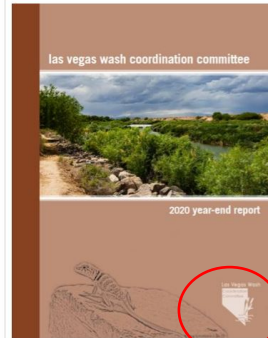
- Website banner
- Report covers
- Outreach materials with sufficient spacing

NEW MEDALLION LOGO



Year-End Report

- Work has begun on 2021 report
- Last annual report
 - Moving to biennial frequency with start of LTOP in FY22/23
- 2021 report will summarize CAMP progress and activities conducted during the year and 2022-23 objectives for 7 programs
- Prior reports posted to lvwash.org



October 2021
www.lvwash.org



Ideal for:

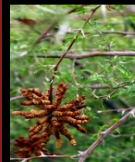
- Mobile devices
- Year-End Report cover
- Presentation slide footers
- Any place where more concise branding is appropriate

Las Vegas Wash Long-Term Operating Plan (LTOP)



Aerial Imagery of the Las Vegas Wash

- ▶ Long-term operations for the Wash program and its assets will begin in FY22-23
- ▶ The LTOP was approved by the LVVWAC in March 2020
 - ▶ Annual cost - ~\$2.4M (2019 dollars)
 - ▶ 36 actions covering 6 core elements from the Las Vegas Wash Comprehensive Adaptive Management Plan



QUESTIONS?



Water Quality Monitoring Update

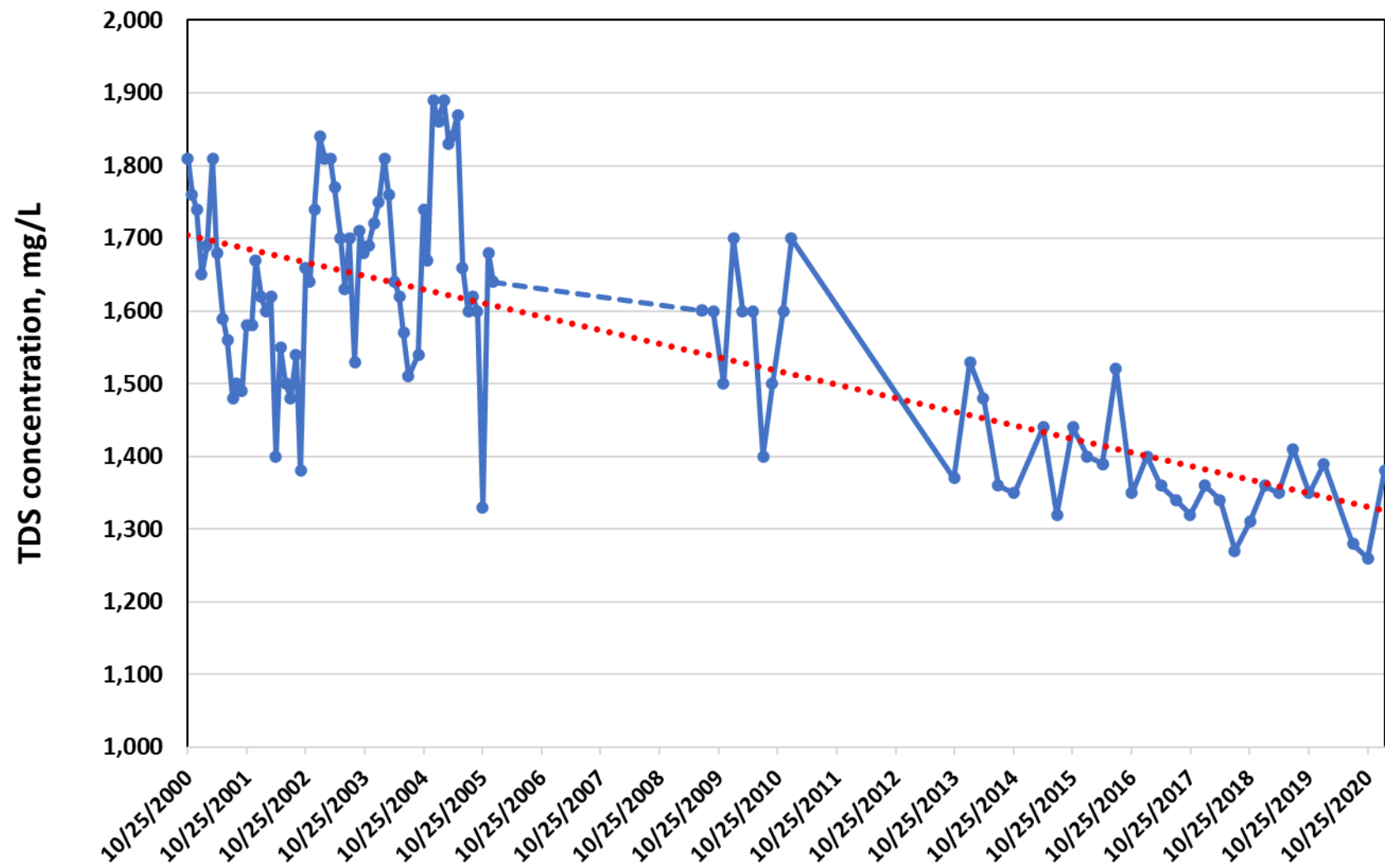
October 26, 2021

2021 Water Quality Sampling & Monitoring Schedule

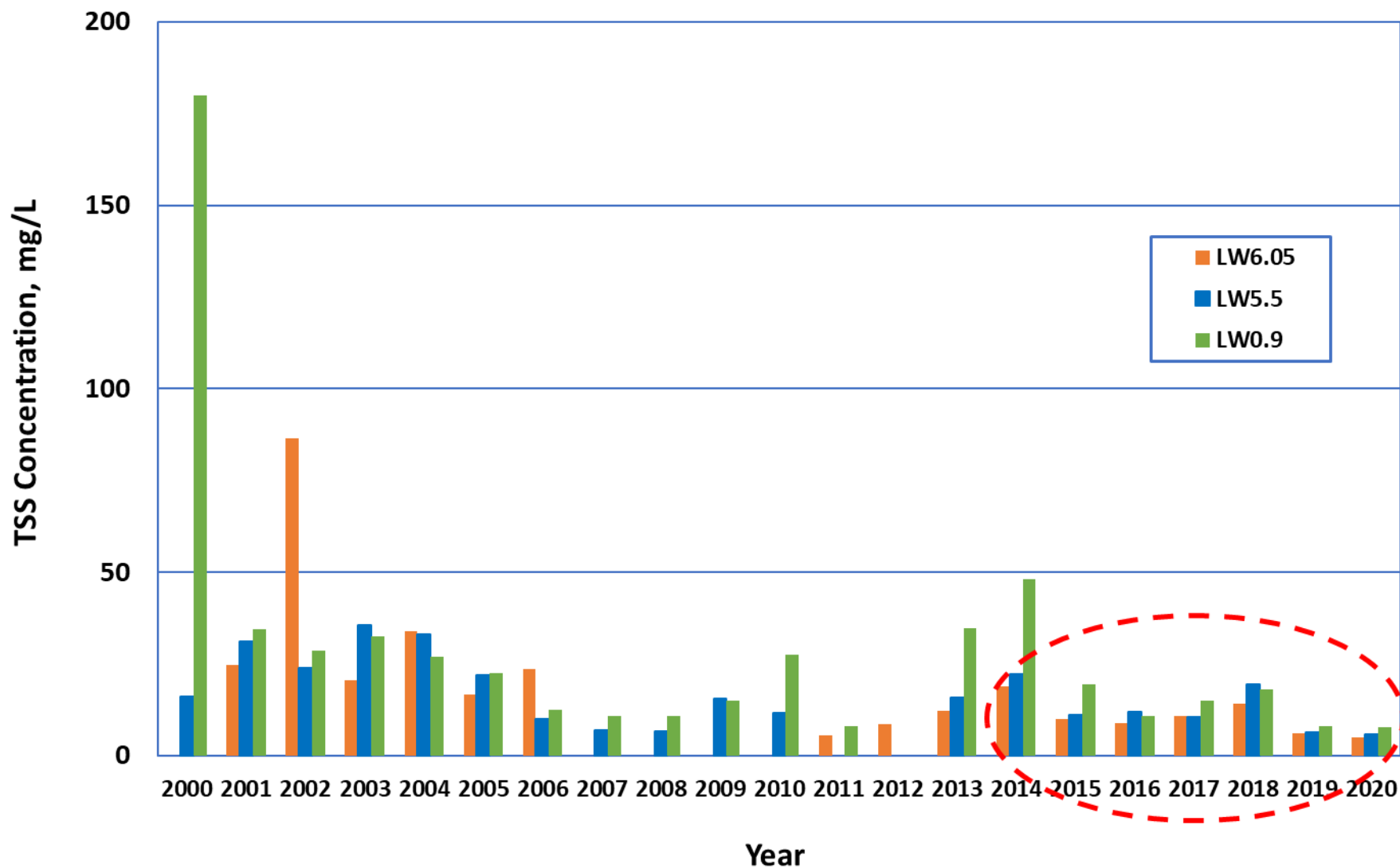
[illegible]

Water Quality Improvements in the Mainstream Wash

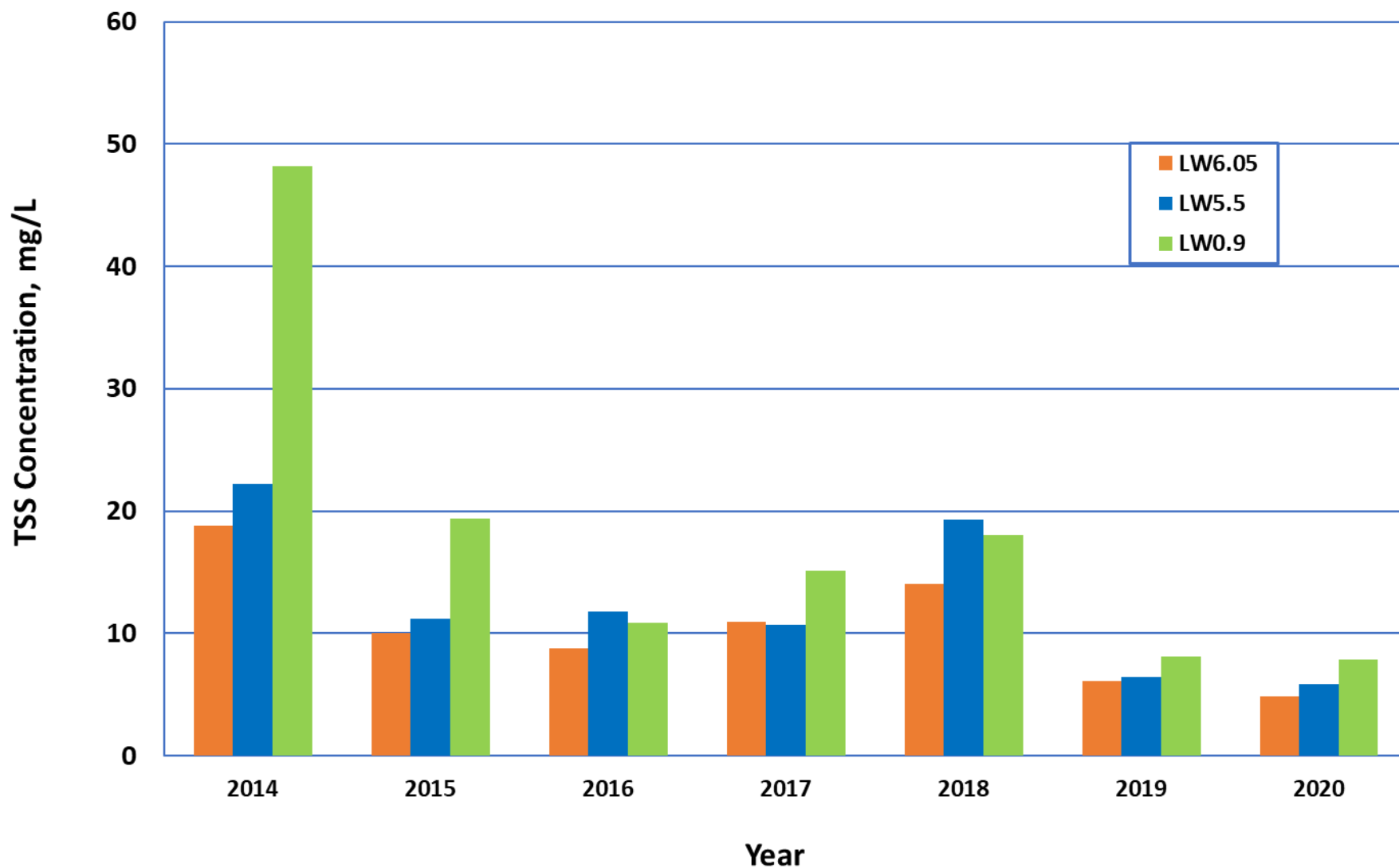
Total Dissolved Solids (TDS) at LW0.9



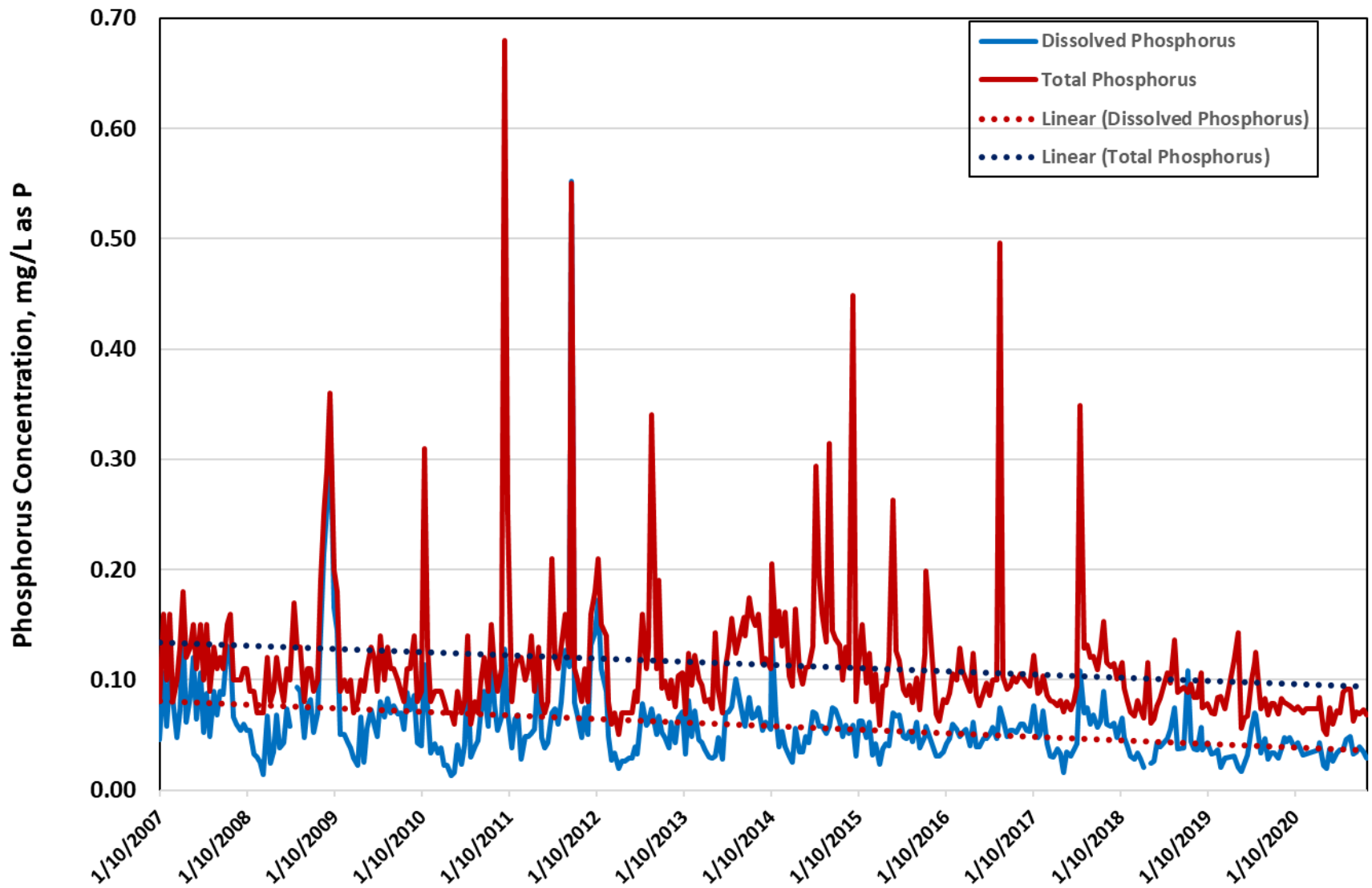
Average TSS Concentrations from LW6.05, LW5.5, and LW0.9 in the Wash (2000-2020)



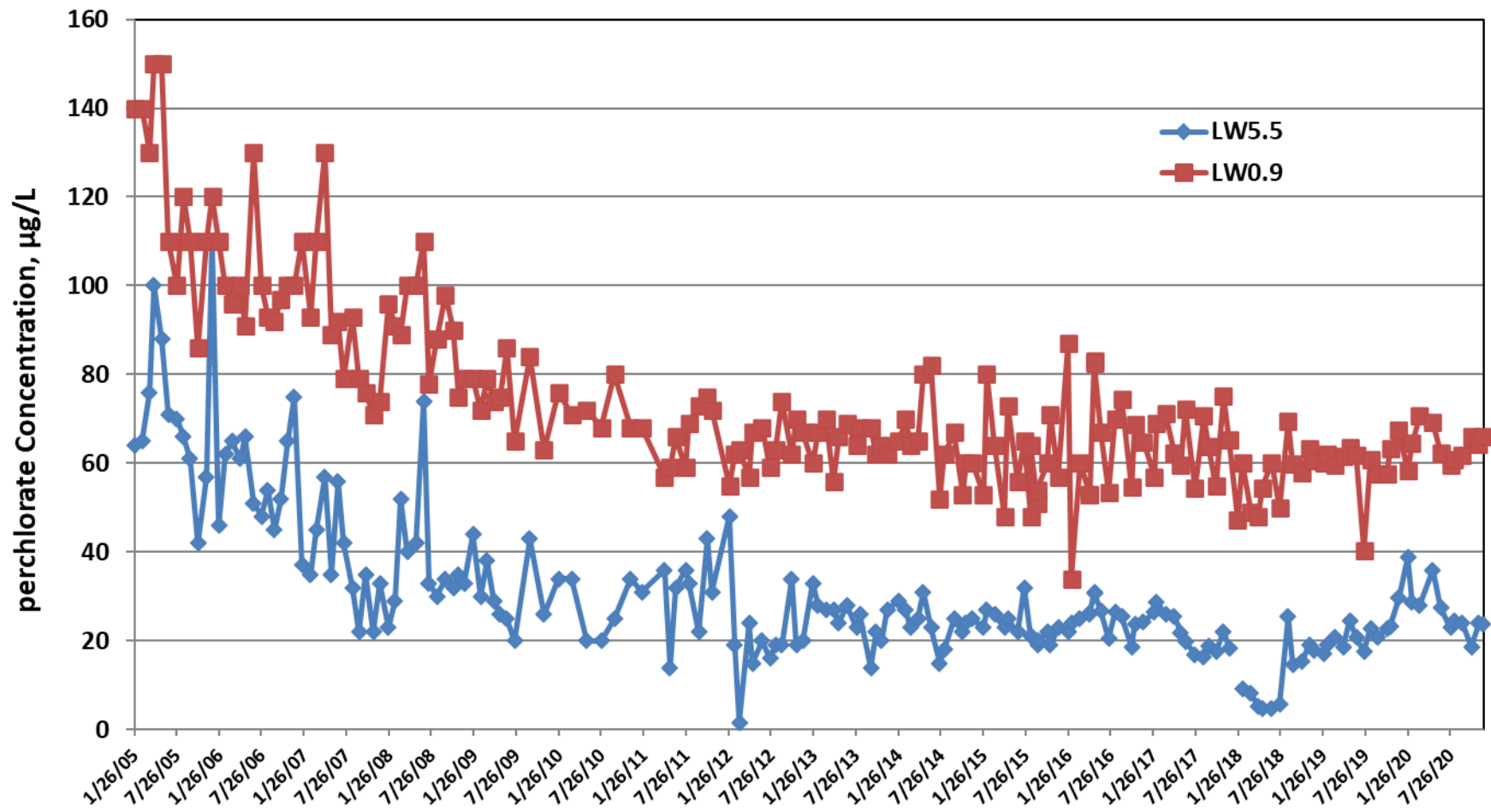
Average TSS Concentrations from LW6.05, LW5.5, and LW0.9 in the Wash (2014-2020)



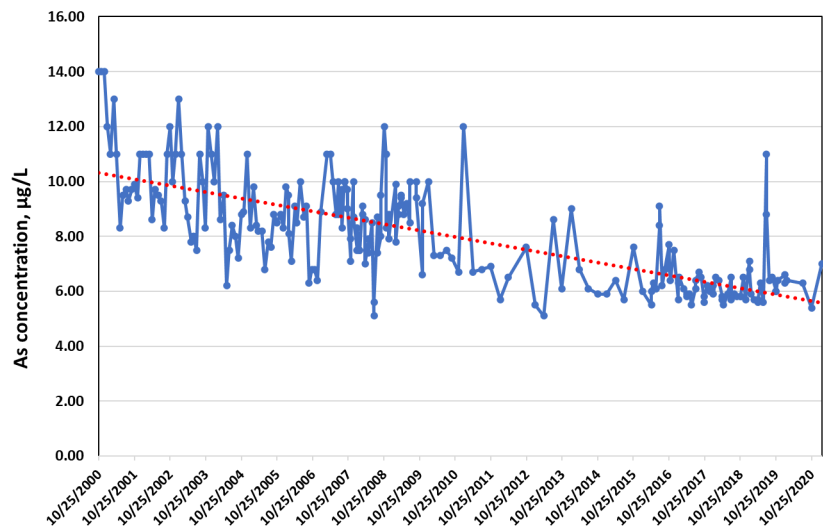
Phosphorus Concentrations at LW0.9 (Data from City of Henderson)



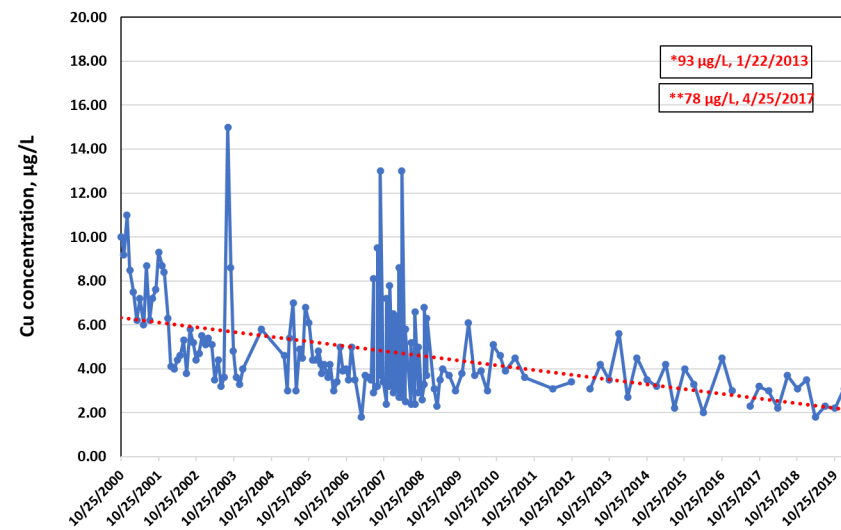
Perchlorate Concentrations from LW 5.5 and LW0.9 in the Las Vegas Wash (Based on the Data Collected during 2005-2020)



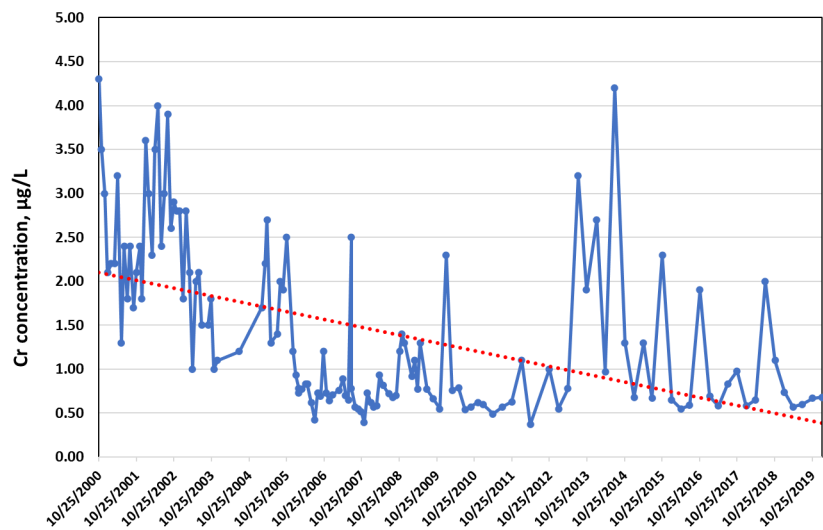
Arsenic (As) at LW0.9



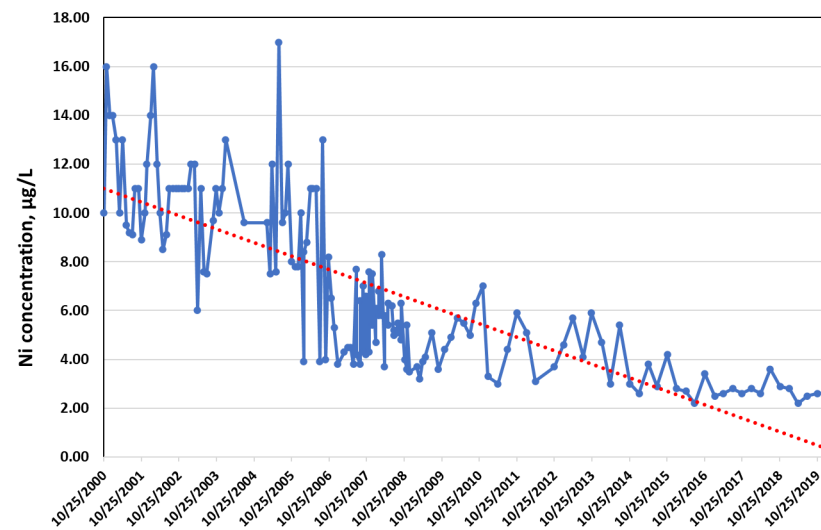
Copper (Cu) at LW0.9



Chromium (Cr) at LW0.9



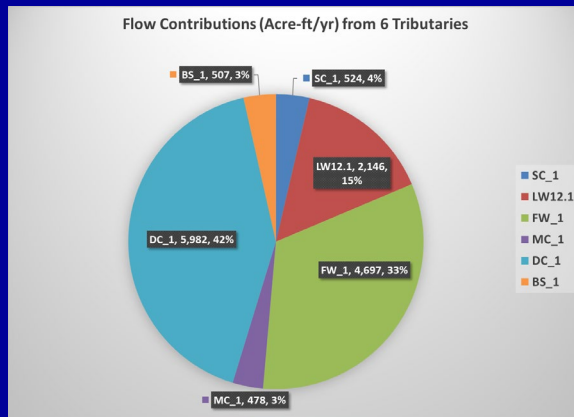
Nickel (Ni) at LW0.9



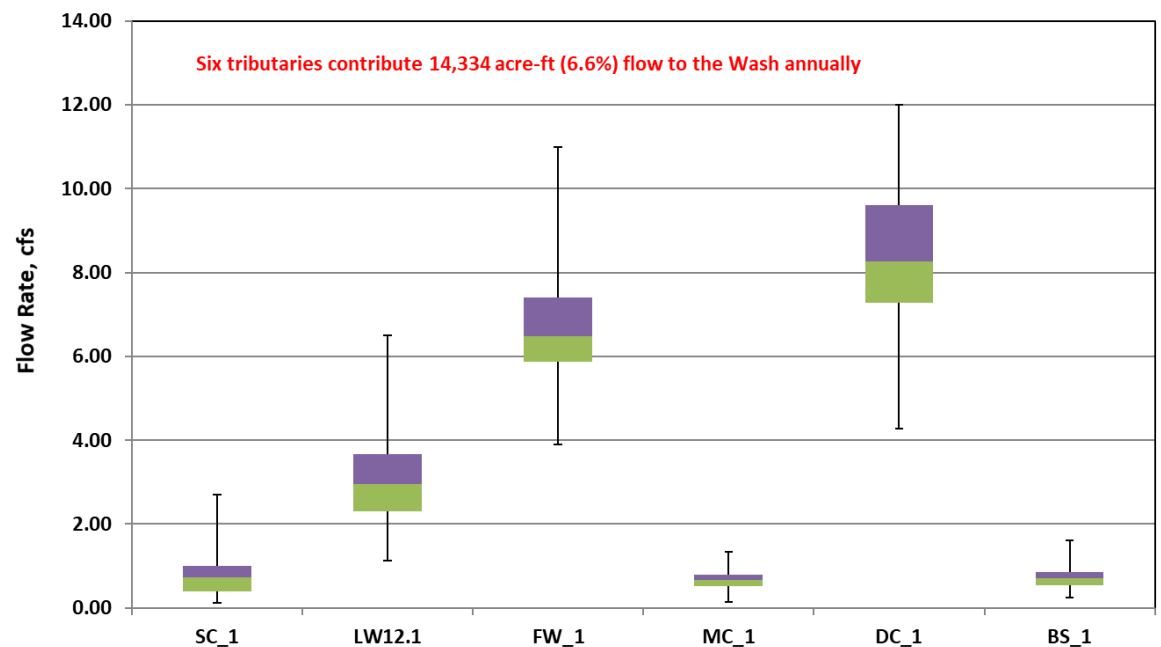
Mass Loadings from Tributaries to the Las Vegas Wash

Flow Rates in Six Tributaries

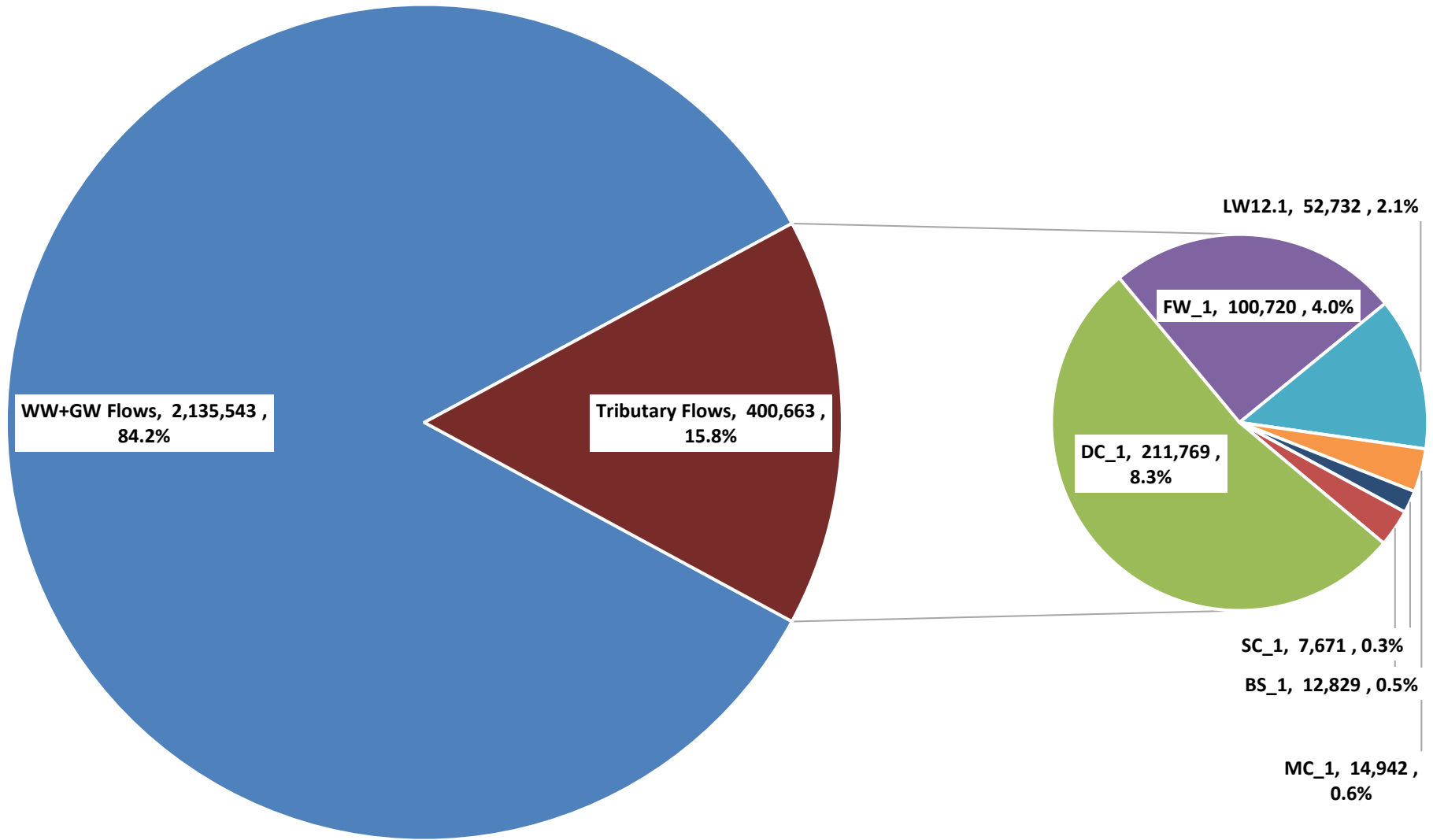
- 19.8 cfs (12.8 MGD) from 6 tributaries to the Wash
- Major Tributaries:
 - DC, FW, LV Creek (~90%)
- Minor Tributaries:
 - SC, MC, BS (~10%)
- 14,334 AF/yr to the Wash
- About 6.6% of the total flow of the Wash



Box Plots of Flow Rates in Six Tributaries to the Wash
(Based on the data collected during 2001-2020)



TDS Mass Loading Rates (lbs/day) and Percentages from Tributaries to the Las Vegas Wash

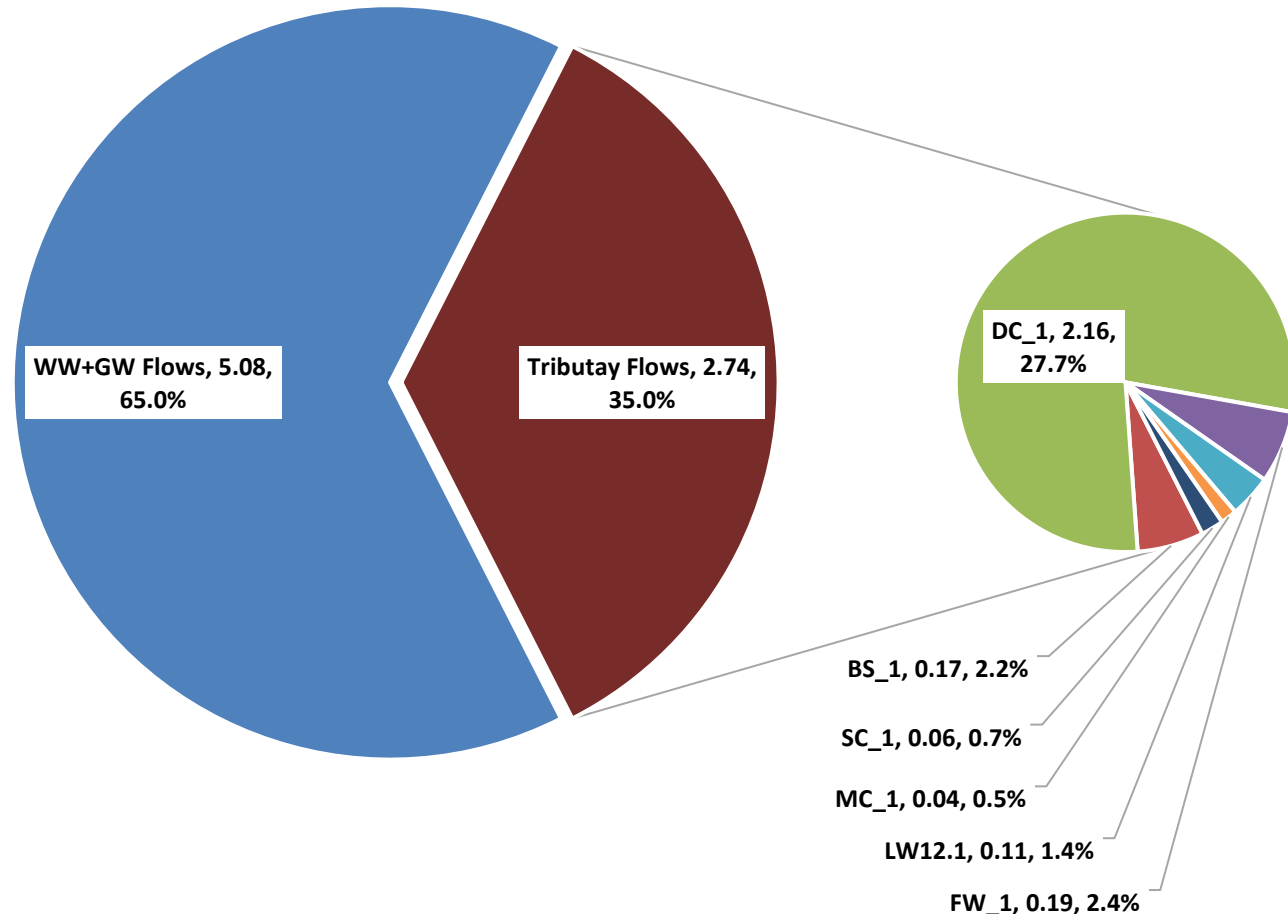


Mass loading rates from tributaries are significant, such as As

Similar patterns for:

- Sb: 8.9%
- Ba: 9.7%
- Cr: 15.5%
- Mo: 19.4%
- Ni: 9.2%
- V: 28.6%

Arsenic (As) Mass Loading Rates (lbs/day) and Percentages from Tributaries to the Las Vegas Wash

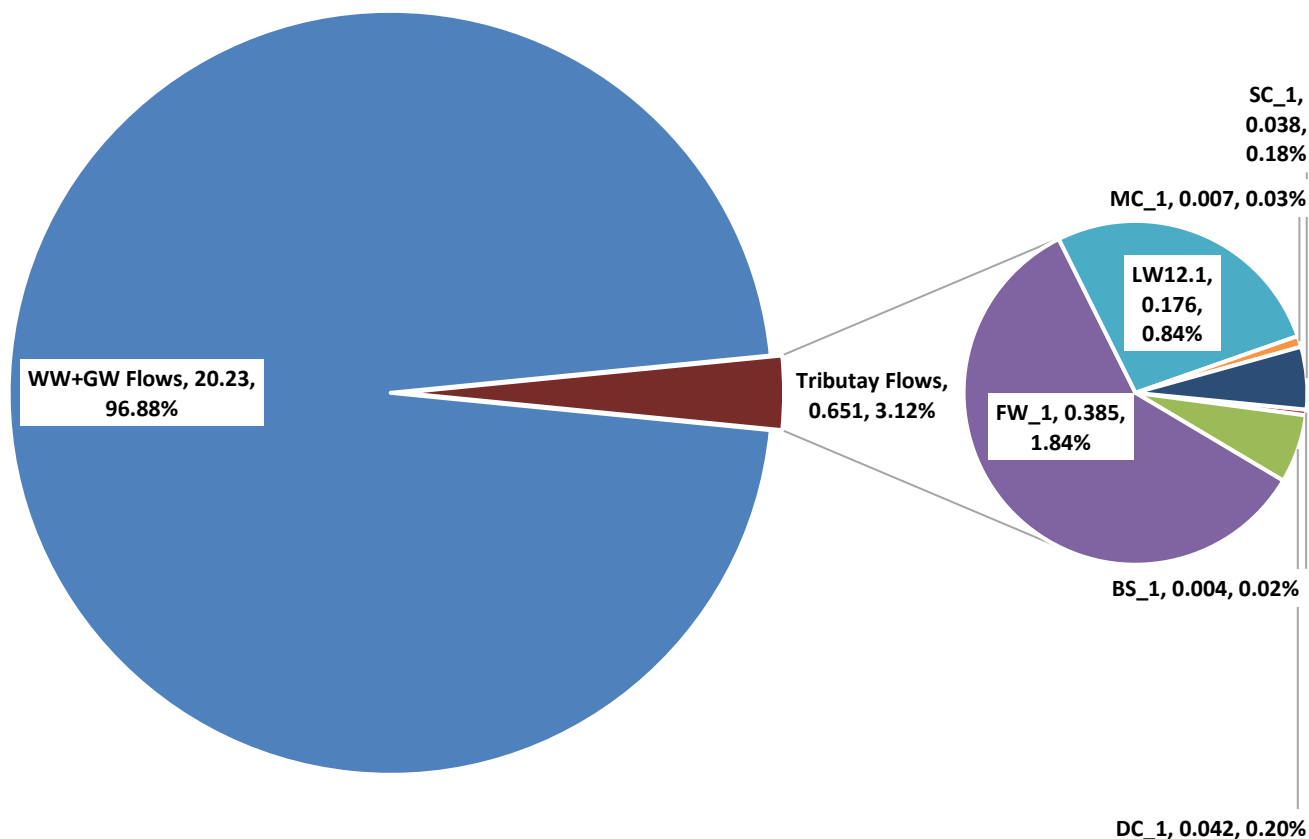


Mass loading rates from tributaries are less significant, such as Zn

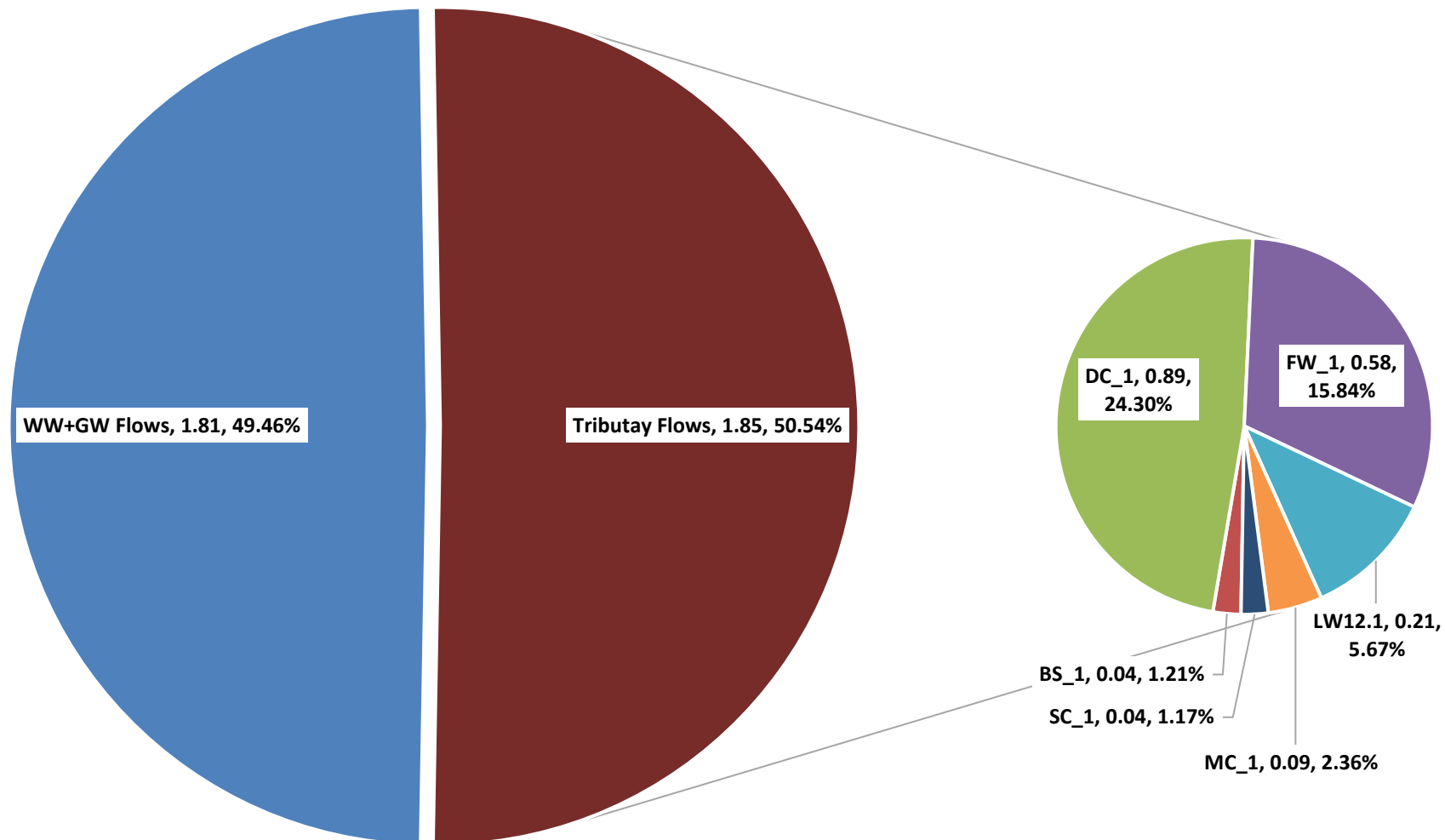
Similar patterns for:

- **Al: 1.2%**
- **Cu: 5.9%**
- **Fe: 1.6%**
- **Pb: 4.1%**
- **Mn: 3.1%**

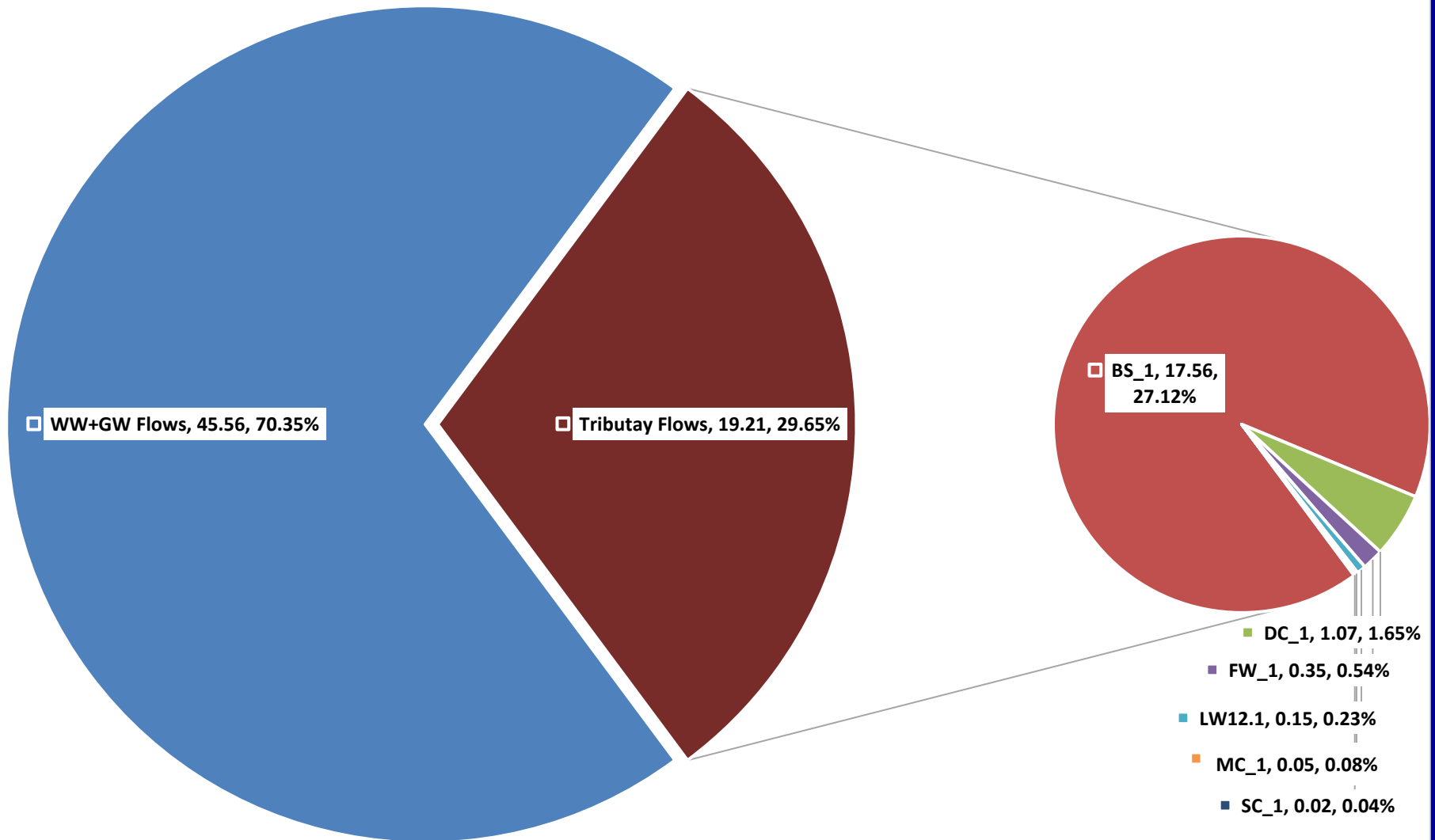
Zinc (Zn) Mass Loading Rates (lbs/day) and Percentages from Tributaries to the Las Vegas Wash



Selenium (Se) Mass Loading Rates (lbs/day) and Percentages from Tributaries to the Las Vegas Wash



Perchlorate Mass Loading Rates (lbs/day) and Percentages from Tributaries to the Las Vegas Wash



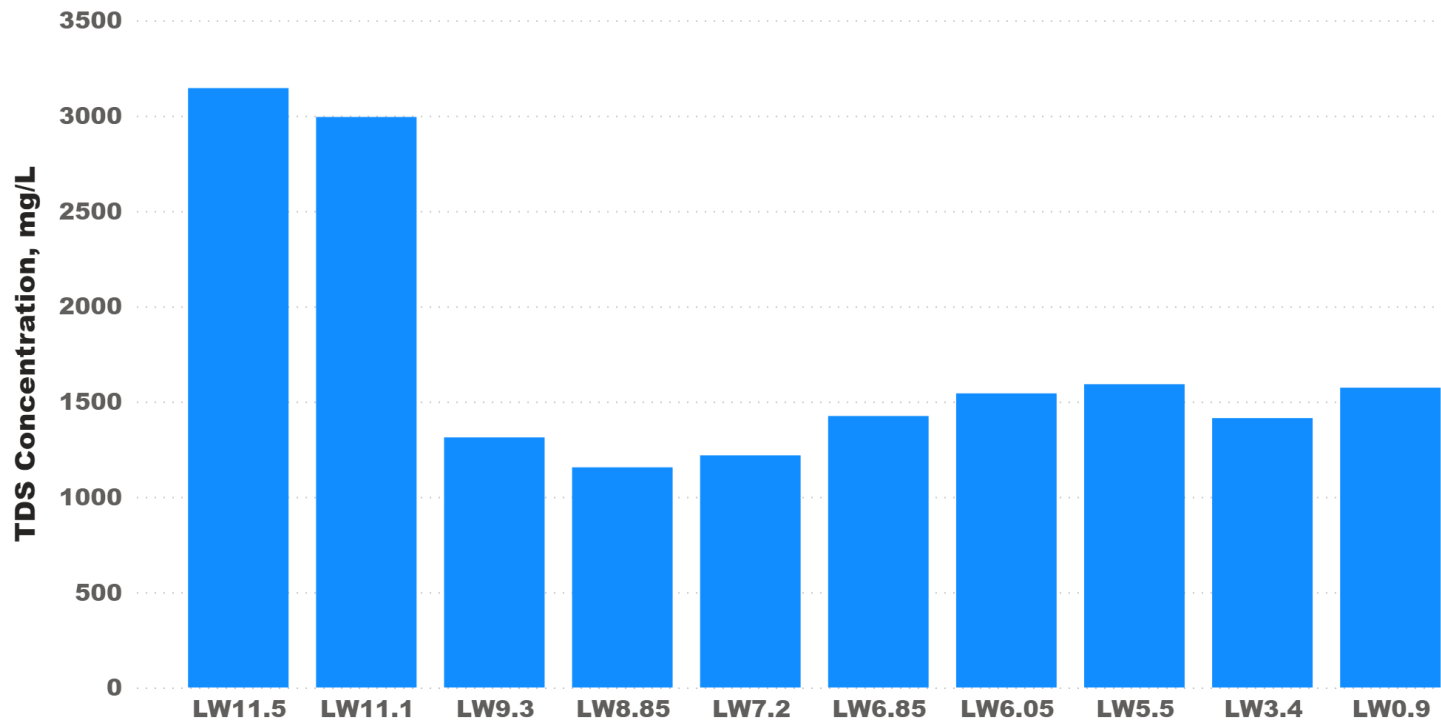
Water Quality Monitoring Results in the Las Vegas Wash

with Power BI

(2000-2021 Data)

Annual Average of TDS Concentrations

Year ● 2020



Site Name

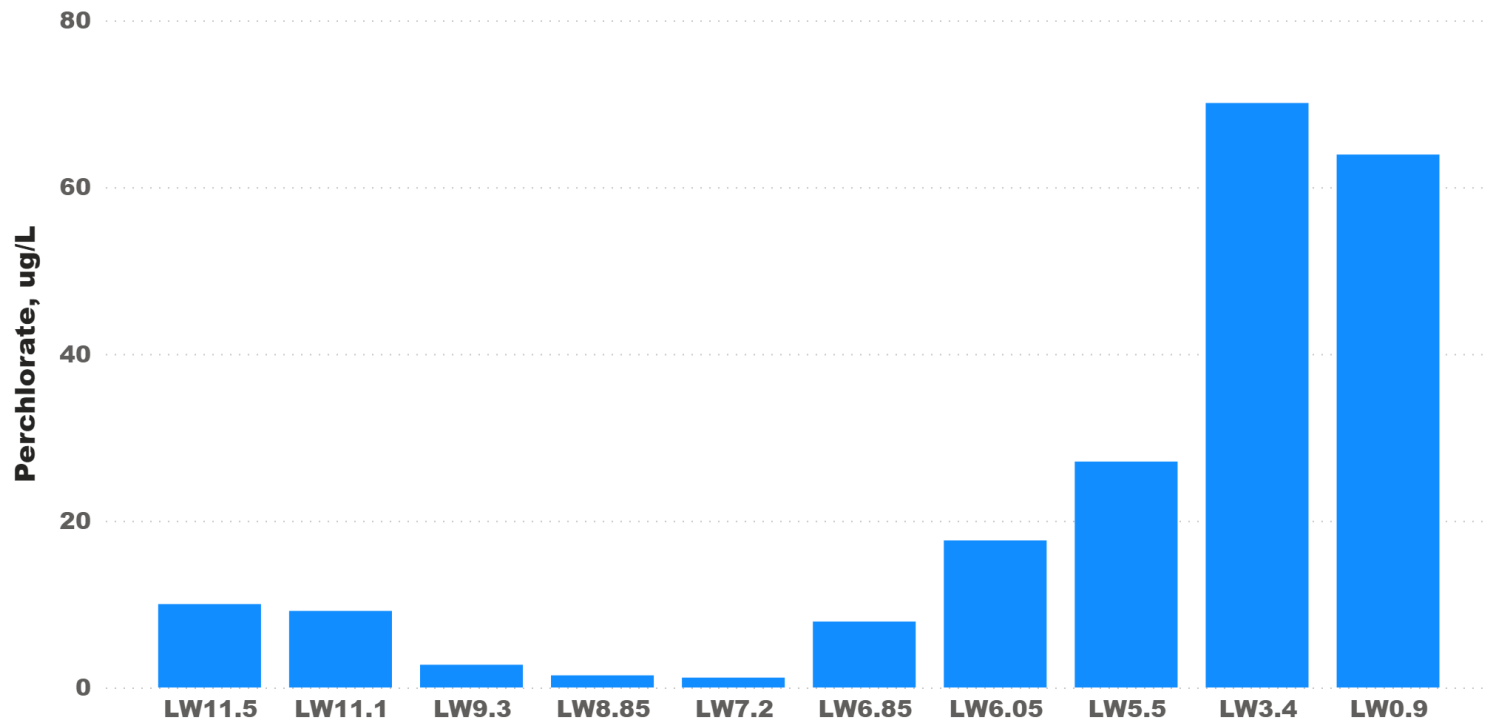
- ☐ LW11.5
- ☐ LW11.1
- ☐ LW9.3
- ☐ LW8.85
- ☐ LW7.2
- ☐ LW6.85
- ☐ LW6.05
- ☐ LW5.5
- ☐ LW3.4
- ☐ LW0.9

Year

2000	2001	2002	2003	2004	2005	2006	2007	2008	2009	2010	2011	2012	2013	2014	2015	2016	2017	2018	2019	2020
------	------	------	------	------	------	------	------	------	------	------	------	------	------	------	------	------	------	------	------	------

Annual Average of Perchlorate Concentrations

Year ● 2020



Site Name

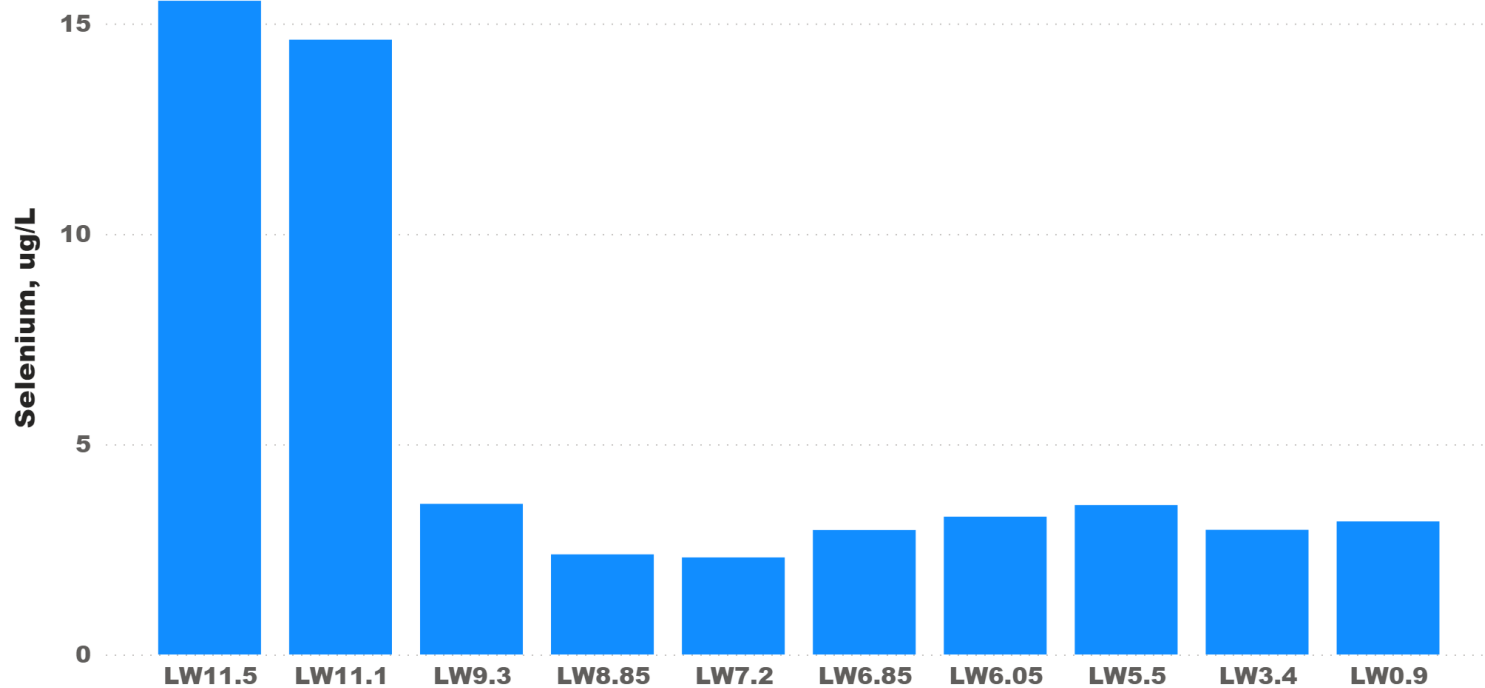
- ☐ LW11.5
- ☐ LW11.1
- ☐ LW9.3
- ☐ LW8.85
- ☐ LW7.2
- ☐ LW6.85
- ☐ LW6.05
- ☐ LW5.5
- ☐ LW3.4
- ☐ LW0.9

Year

2000	2001	2002	2003	2004	2005	2006	2007	2008	2009	2010	2011	2012	2013	2014	2015	2016	2017	2018	2019	2020
------	------	------	------	------	------	------	------	------	------	------	------	------	------	------	------	------	------	------	------	------

Annual Average of Selenium Concentrations

Year ● 2020



Site Name

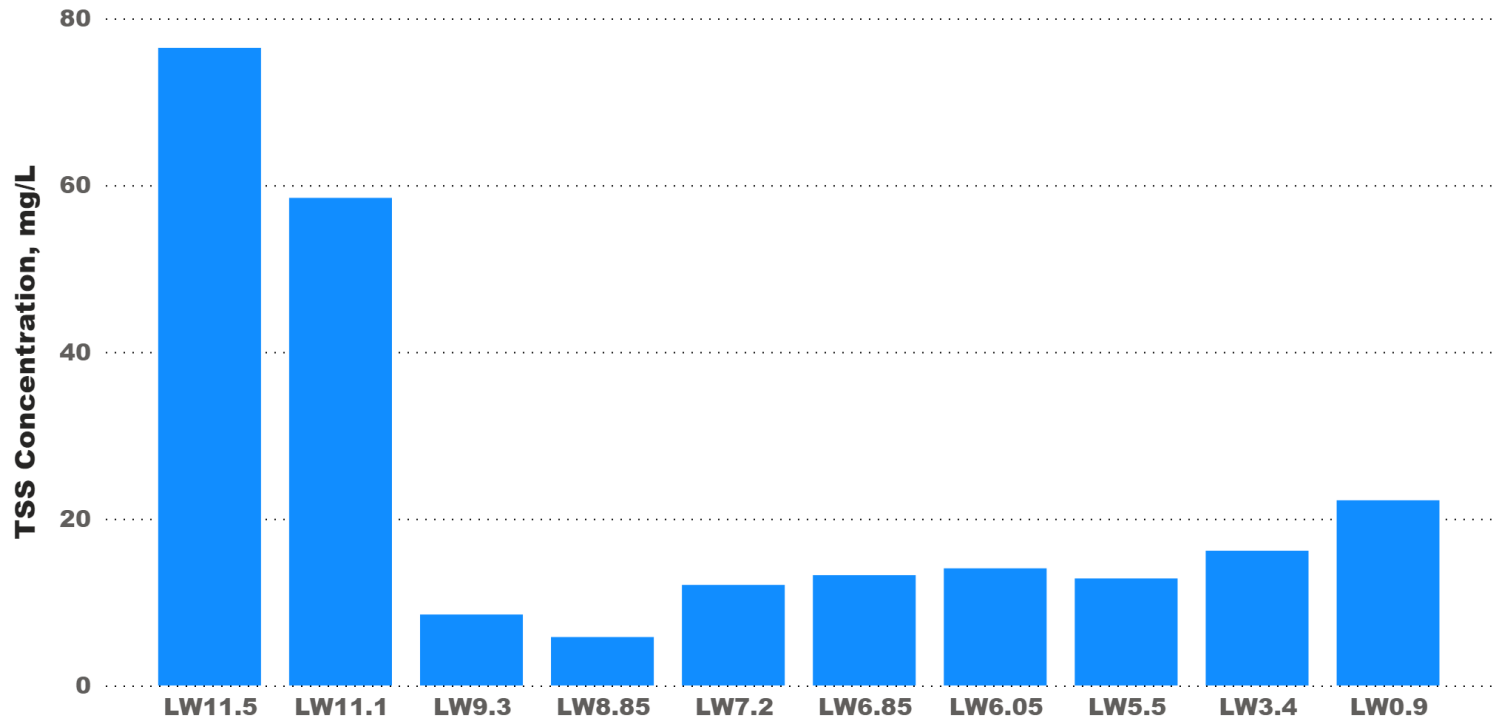
- ☐ LW11.5
- ☐ LW11.1
- ☐ LW9.3
- ☐ LW8.85
- ☐ LW7.2
- ☐ LW6.85
- ☐ LW6.05
- ☐ LW5.5
- ☐ LW3.4
- ☐ LW0.9

Year

2000	2001	2002	2003	2004	2005	2006	2007	2008	2009	2010	2011	2012	2013	2014	2015	2016	2017	2018	2019	2020
------	------	------	------	------	------	------	------	------	------	------	------	------	------	------	------	------	------	------	------	------

Annual Average of TSS Concentrations

Year ● 2020



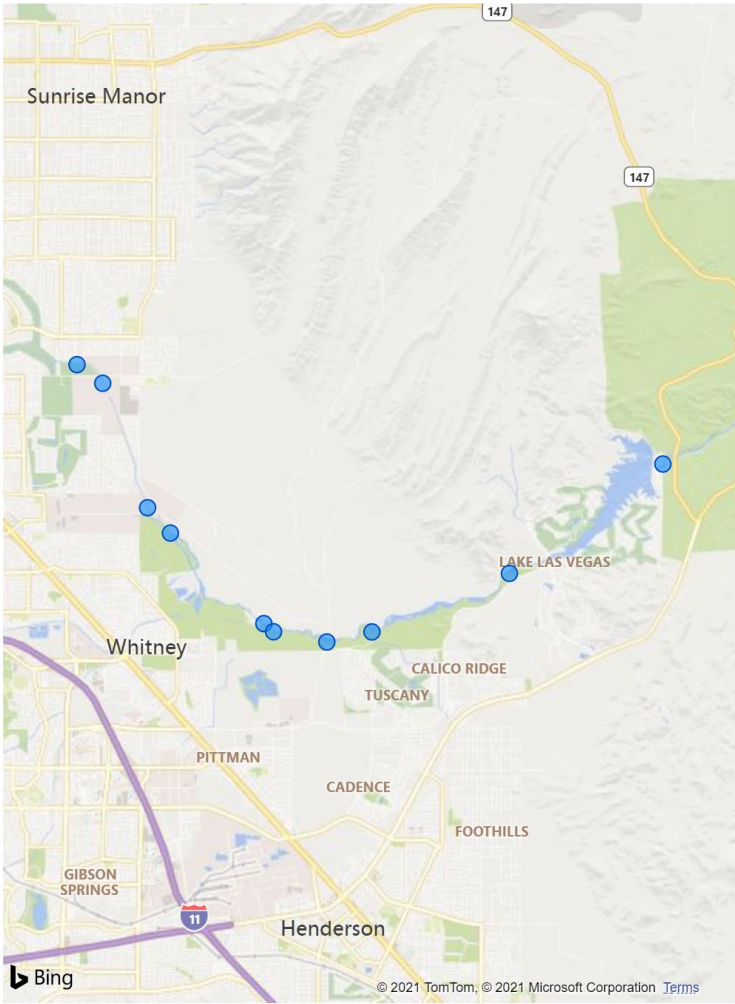
Site Name

- ☐ LW11.5
- ☐ LW11.1
- ☐ LW9.3
- ☐ LW8.85
- ☐ LW7.2
- ☐ LW6.85
- ☐ LW6.05
- ☐ LW5.5
- ☐ LW3.4
- ☐ LW0.9

Year

2000	2001	2002	2003	2004	2005	2006	2007	2008	2009	2010	2011	2012	2013	2014	2015	2016	2017	2018	2019	2020
------	------	------	------	------	------	------	------	------	------	------	------	------	------	------	------	------	------	------	------	------

Latitude and Longitude of Mainstream Wash Sample Sites



Site Name	Sample Date	Parameter	Value
LW0.9	Tuesday, December 15, 2020	Perchlorate	6
LW11.1	Tuesday, December 15, 2020	Perchlorate	7
LW11.5	Tuesday, December 15, 2020	Perchlorate	1
LW3.4	Tuesday, December 15, 2020	Perchlorate	7
LW5.5	Tuesday, December 15, 2020	Perchlorate	2
LW6.05	Tuesday, December 15, 2020	Perchlorate	2
LW6.85	Tuesday, December 15, 2020	Perchlorate	2
LW7.2	Tuesday, December 15, 2020	Perchlorate	2
LW8.85	Tuesday, December 15, 2020	Perchlorate	2
LW9.3	Tuesday, December 15, 2020	Perchlorate	2
LW0.9	Tuesday, November 24, 2020	Perchlorate	6
Total			4

Site Name	Sample Date	Parameter	Value
LW0.9	Wednesday, October 25, 2000	Selenium Tr	6
LW11.1	Wednesday, October 25, 2000	Selenium Tr	7
LW5.5	Wednesday, October 25, 2000	Selenium Tr	1
LW6.05	Wednesday, October 25, 2000	Selenium Tr	7
LW0.9	Monday, November 20, 2000	Selenium Tr	7
LW11.1	Monday, November 20, 2000	Selenium Tr	7
LW5.5	Monday, November 20, 2000	Selenium Tr	1
LW6.05	Monday, November 20, 2000	Selenium Tr	7
LW0.9	Wednesday, December 20, 2000	Selenium Tr	7
LW11.1	Wednesday, December 20, 2000	Selenium Tr	7
LW5.5	Wednesday, December 20, 2000	Selenium Tr	1
LW6.05	Wednesday, December 20, 2000	Selenium Tr	7
LW0.9	Thursday, January 18, 2001	Selenium Tr	7
LW11.1	Thursday, January 18, 2001	Selenium Tr	7
LW5.5	Thursday, January 18, 2001	Selenium Tr	1
Total			4

Site Name	Sample Date	Parameter	Value
LW0.9	Wednesday, October 25, 2000	Total Dissolv	6
LW0.9	Monday, November 20, 2000	Total Dissolv	7
LW0.9	Wednesday, December 20, 2000	Total Dissolv	1
LW0.9	Thursday, January 18, 2001	Total Dissolv	7
LW0.9	Wednesday, February 21, 2001	Total Dissolv	7
LW0.9	Wednesday, March 28, 2001	Total Dissolv	7
LW0.9	Wednesday, April 25, 2001	Total Dissolv	7
LW0.9	Wednesday, May 30, 2001	Total Dissolv	7
LW0.9	Wednesday, June 27, 2001	Total Dissolv	7
LW0.9	Monday, July 30, 2001	Total Dissolv	7
LW0.9	Wednesday, August 22, 2001	Total Dissolv	7
Total			4

Site Name	Sample Date	Parameter	Value
LW0.9	Wednesday, October 25, 2000	Total Susper	6
LW11.1	Wednesday, October 25, 2000	Total Susper	7
LW5.5	Wednesday, October 25, 2000	Total Susper	1
LW6.05	Wednesday, October 25, 2000	Total Susper	7
LW0.9	Monday, November 20, 2000	Total Susper	7
LW11.1	Monday, November 20, 2000	Total Susper	7
LW5.5	Monday, November 20, 2000	Total Susper	1
LW6.05	Monday, November 20, 2000	Total Susper	7
LW0.9	Wednesday, December 20, 2000	Total Susper	7
LW11.1	Wednesday, December 20, 2000	Total Susper	7
LW5.5	Wednesday, December 20, 2000	Total Susper	1
LW6.05	Wednesday, December 20, 2000	Total Susper	7
LW0.9	Thursday, January 18, 2001	Total Susper	7
LW11.1	Thursday, January 18, 2001	Total Susper	7
LW5.5	Thursday, January 18, 2001	Total Susper	1
Total			4



Questions?





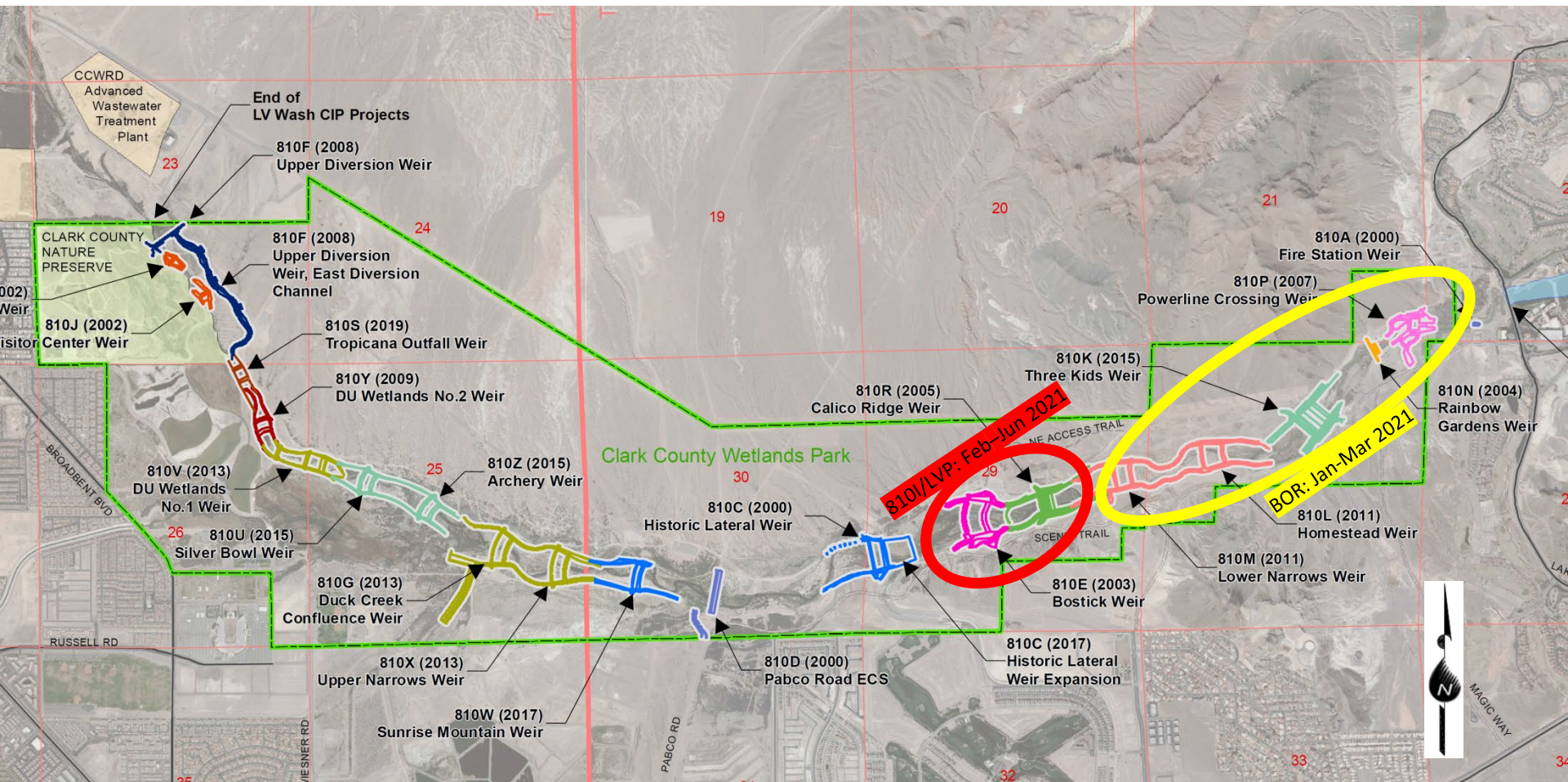
Status Updates

Las Vegas Wash Coordination Committee

October 26, 2021



Locations





Wash Activities

- Reconstruction of Existing Weir Structures
 - Bostick and Calico Ridge weirs
 - 810I/LVP: Feb–June 2021
 - Lower Narrows thru Powerline Crossing weirs
 - BOR: Jan–March 2021
- Place Facilities Back to Originally Constructed Lines and Grades
 - Removal of Vegetation and Sediment from Structures
 - Reposition and Installation of Rip Rap



810 – Final Weir Modification - Bostic



810 – Final Weir Modification - Bostic



BOR – Homestead Before



BOR – Homestead After



BOR – Lower Narrows Before



BOR – Lower Narrows After



BOR – Powerline Before



BOR – Powerline After



BOR – Rainbow Gardens Before



BOR – Rainbow Gardens After



BOR – Three Kids Before



BOR – Three Kids After

Consultant Engineering Services

- Objective:
 - professional services for the review of existing Las Vegas Wash stabilization facilities and stream sections for compliance with all local, regional, state and federal regulations and recommendations for remediation of any areas not in compliance
- Louis Berger

Consultant Engineering Services

Task Name	Finish Date
DRAFT Facilities Assessment Report	complete
FINAL Facilities Assessment Report	complete
FINAL Long Term Operating Plan (LTOP)	complete
DRAFT Letter of Map Revision (LOMR)	<i>Ongoing FEMA approval coordination</i>

Questions



Clark County Wetlands Park LVWCC Update

October 26, 2021

Elizabeth Bickmore, Senior Program Administrator

Preserving and enhancing natural and cultural resources and providing educational, recreational, and research opportunities for the public.



Nature Center Fully Operational

Nature Center Operations

6 days a week

Tuesday – Sunday

9:00 AM 3:00 PM



Programs

Families & Adults:

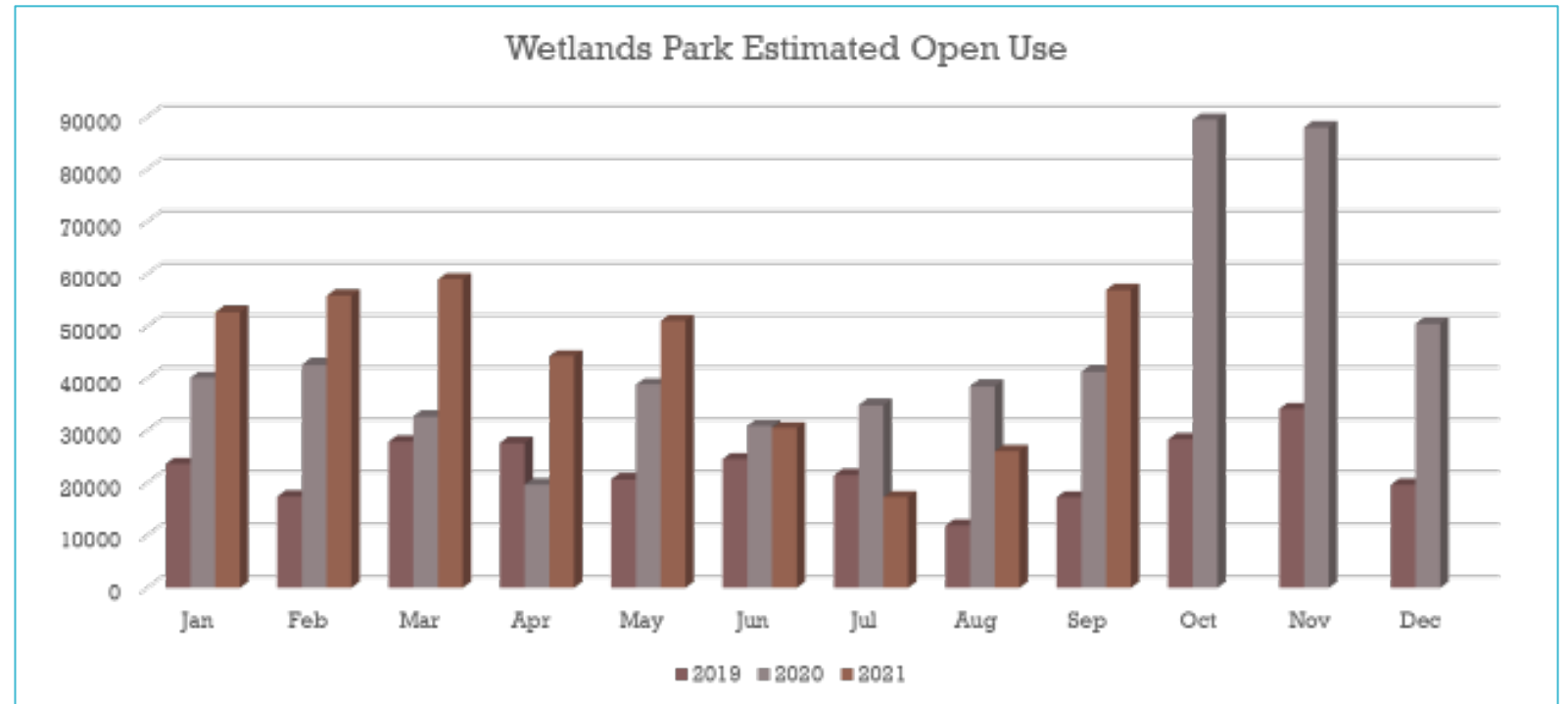
Discovery Walks, Birding, Art

Stewardship:

Monthly & Special Requests

Kids ages 3 - 8:

Wetlands Explorers, Nature Tales & Storytime



Field Trips

Four Options

- Guided Field Trips
 - Requested to date: 10 schools, 548 students
- Self-Guided Field Trips
 - Requested to date: 3 schools, 128 students
- Virtual Field Trips
 - Requested to date: 6 schools, 504 students
 - 8 schools with 1,915 students have requested the link to the WP Virtual Field Trip video
- Fee-Based Private Field Trips
 - Reserved to date: 2 schools, 80 students



Art @ Wetlands Park



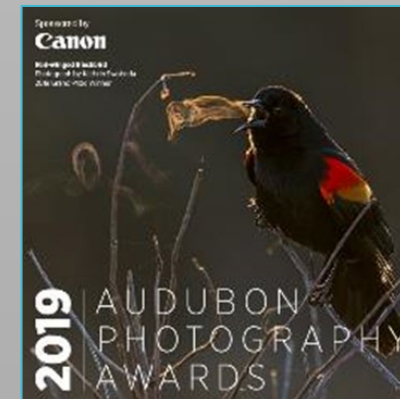
Art in the Park

- PLAY – Temporary Art June 2021
- Plein Air Paintout April 18, 2021
- Art Gallery
 - Plein Air Exhibit June 2021
 - National Audubon 2019 Photography Awards Traveling Display *April through September 2021*
 - North American Nature Photography Association (NANPA) College Scholars Photography Show August through September 2021



Studio WP Art Programs

- Nature Art for Kids
- Nature Journaling
- Charcoal Drawing
- Relief Printmaking



Annual Events

Haunt the Wetlands – October 29

BioBlitz – Spring 2022

Migratory Bird Day – Spring 2022



Haunt the Wetlands
At Clark County Wetlands Park
Friday, October 29

www.ccwetlandspark.com
4 pm - 8 pm Fee: \$5 for Ages 4+

Wildfires

February 18 & 20, 2021



Clark County Wetlands Park
Fire History - February 2021

Date: 4/1/2021



0 250 500 1,000 Feet

Legend

- Fire 2021
- Paved Road
- Wetlands Park Boundary

RD 15 SNPLMA

Project Timeline

Monument Construction - March 2021

Substantial Completion - Winter 2022

Nature Play Corner
Interpretive Signs
Wayfinding



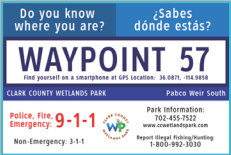
Signage Plan

Significant Points

- Location & Directional
- Regulatory and Safety
- Waypoints



TRAIL SIGNAGE



SIGNAGE AT WEIRS

Fencing & Barriers Planning

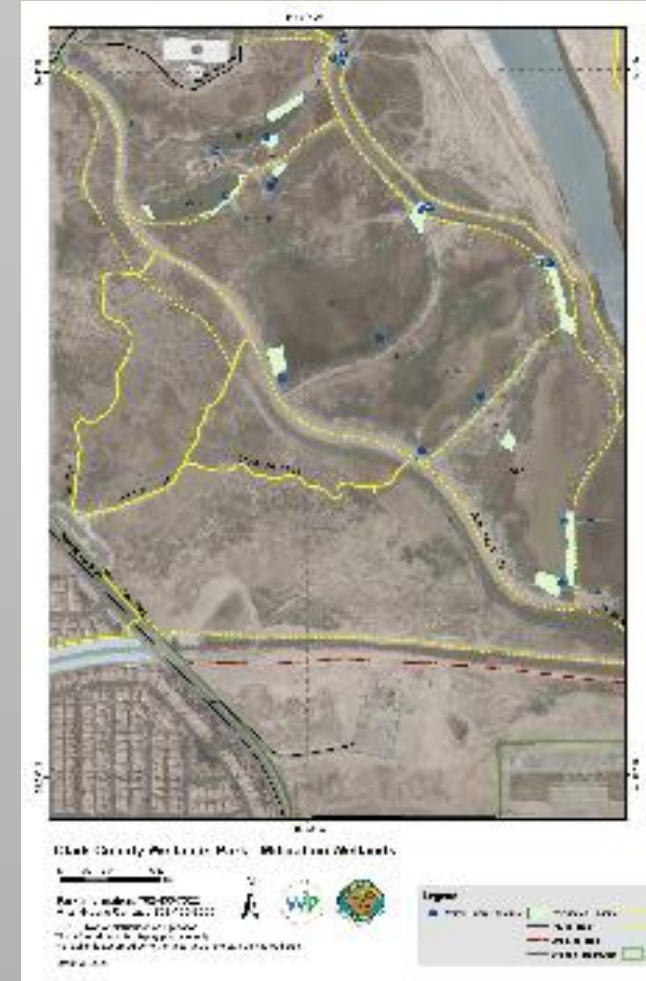
Implementation

- Bollards at Bridge Crossings
- Fencing and gates
- Signage
- Enforcement
- Vehicle Permit Process



Fuel Reduction & Restoration

- Fuel Reduction & Restoration
 - NPS - expanded 4-year management agreement
 - 2021-25
 - Bureau of Land Management – grant
 - Nevada Division Forestry – grant
 - Fire Crew Staff
 - Conservation Camp
- Resource Planning
 - Phragmites Management Plan
 - Wildlife Rehabilitation Plan
 - Mowers for aquatic terrestrial vegetation



Hollywood Extension Project

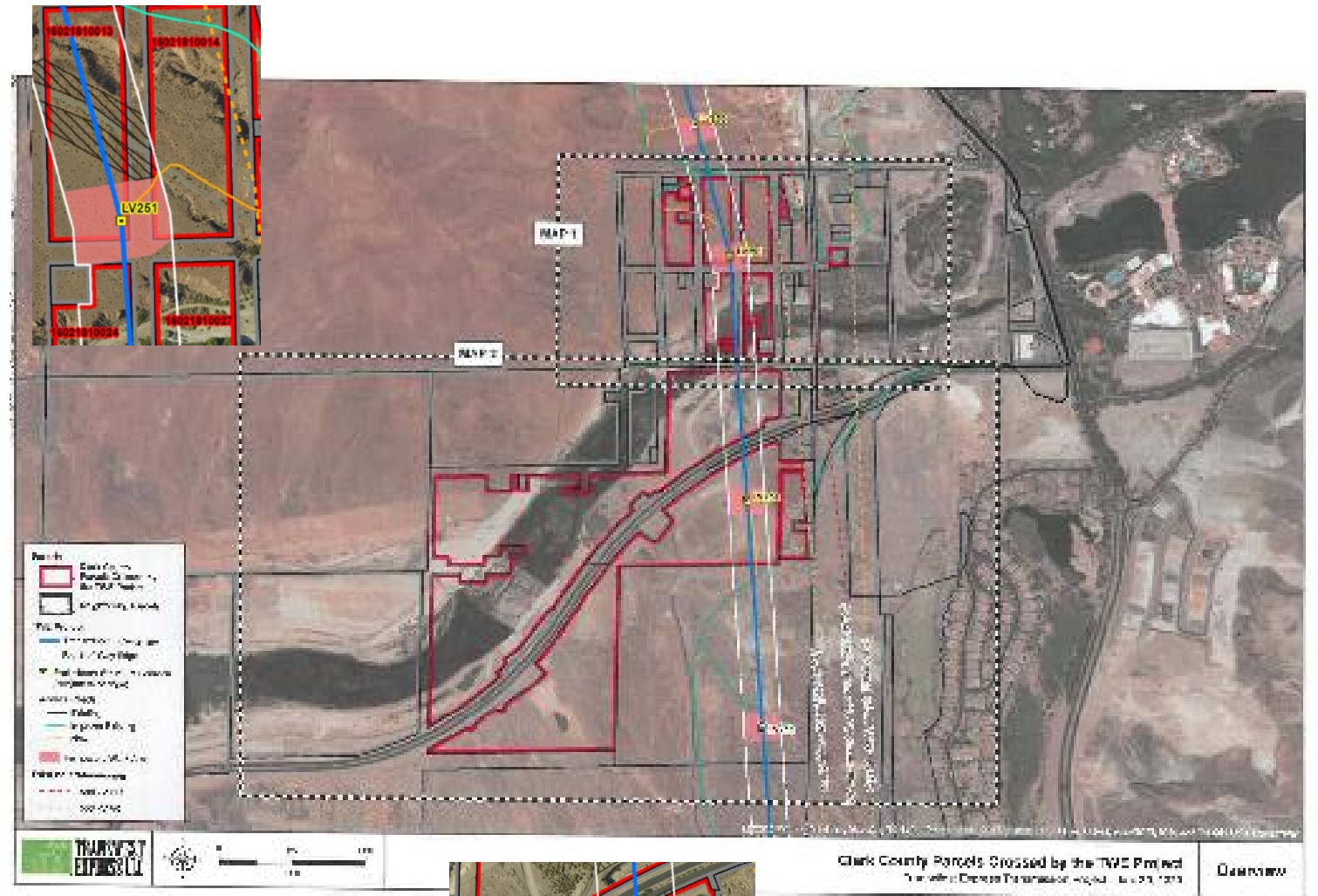
Public Works

Louise Steeps
Principal Civil Engineer
702-455-6216

- Alignment
 - 1B
- Design Phasing
 - I - Galleria - Wetlands Park
 - II - Wetlands Park to Hollywood
- Permitting
 - BOR Lead Agency
 - USACOE
 - BLM



Transwest Powerline Corridor



Cadence Sports Park RCB Channel

- New location
- RCB 12'x6'
- Potential Impacts
 - Trail
 - Service road
 - Revegetation



Questions?



Lake Mead Update

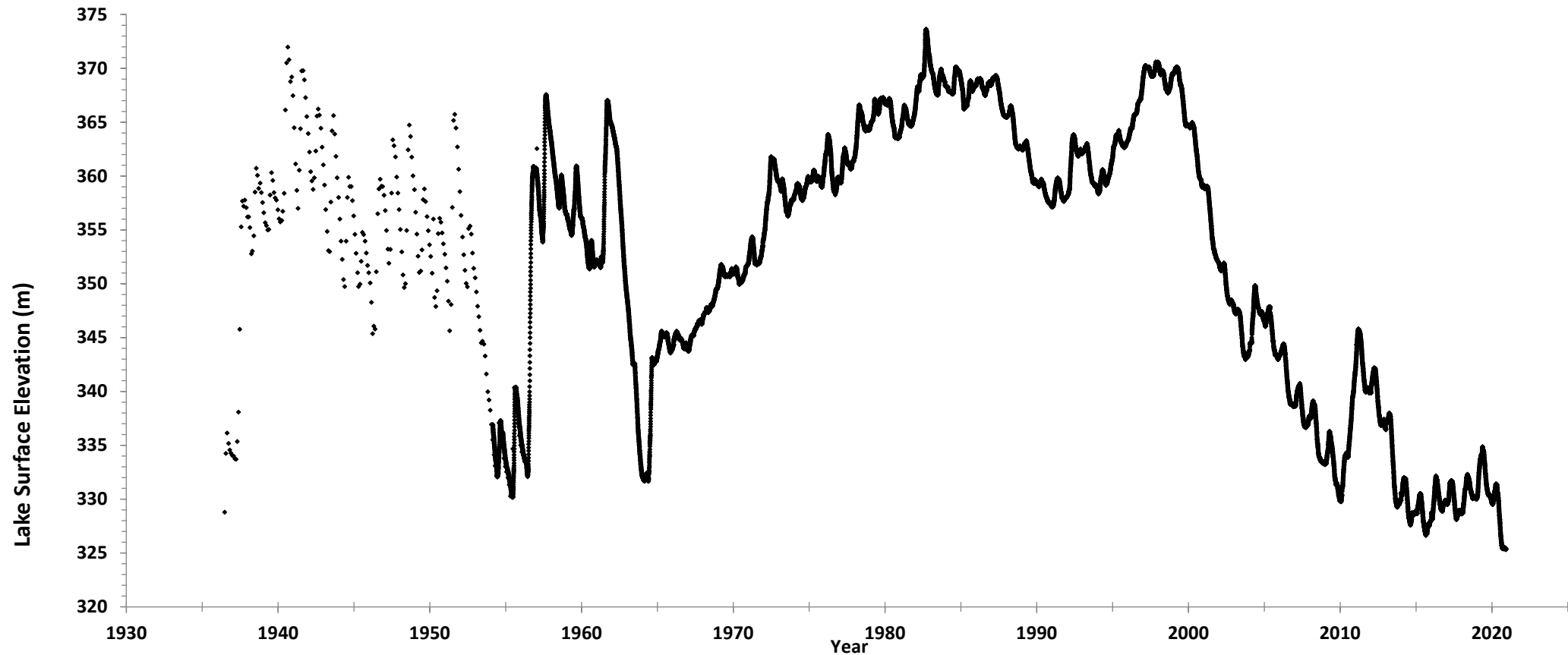
October 26, 2021

Todd Tietjen, Ph.D.
Regional Water Quality Manager
Research and Development Acting Manager
Southern Nevada Water Authority
Todd.Tietjen@snwa.com

Lake Mead

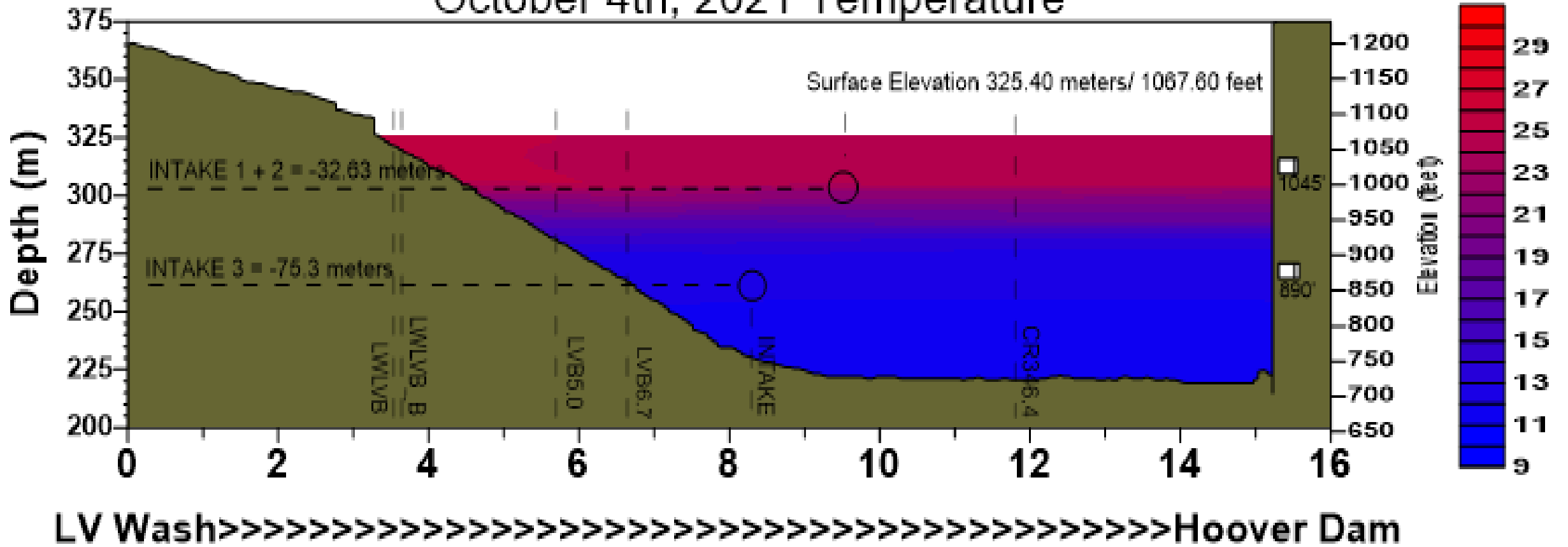
- Talking about Water Quality, Not Water Quantity.
- All things considered water quality remains high in Lake Mead and Mohave
 - Localized issues
 - Toxin producing Algae
 - Lower lake levels are not going to be helpful in the long run
 - Short residence time continues to benefit water quality in Lake Mead.
- Modeling of Lake Mead is becoming more important in considering nearer term conditions in the lake.

Lake surface elevation



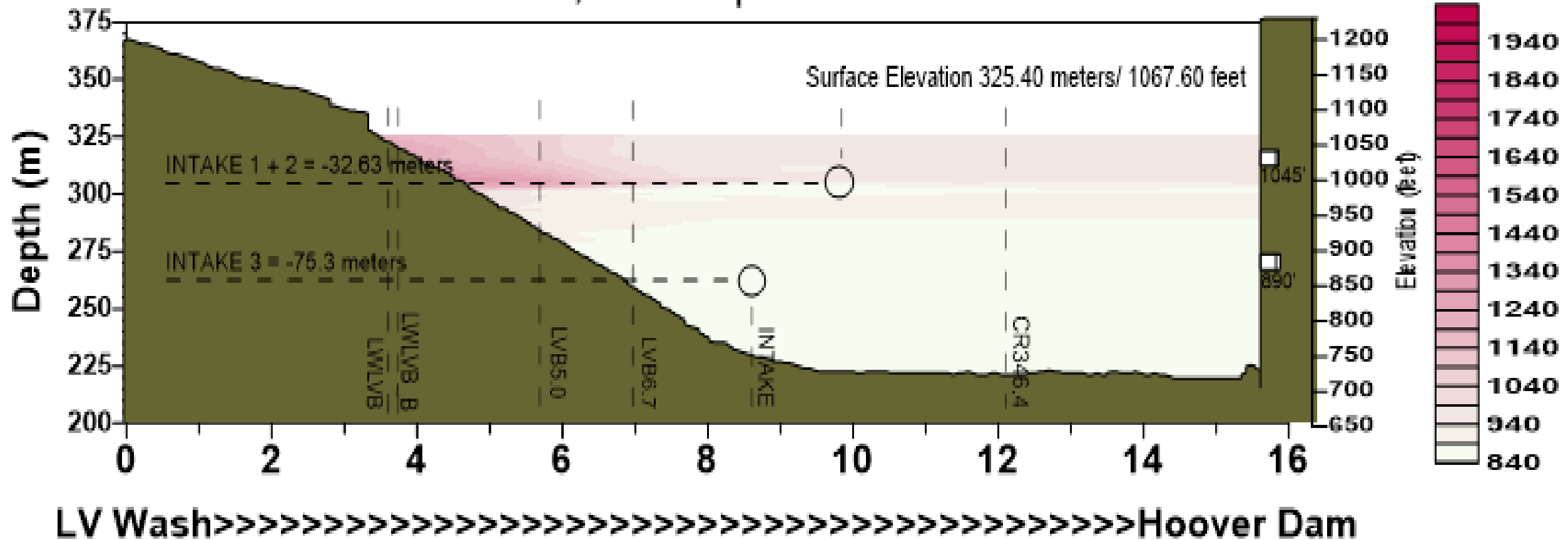
Lake Mead Temperature

October 4th, 2021 Temperature



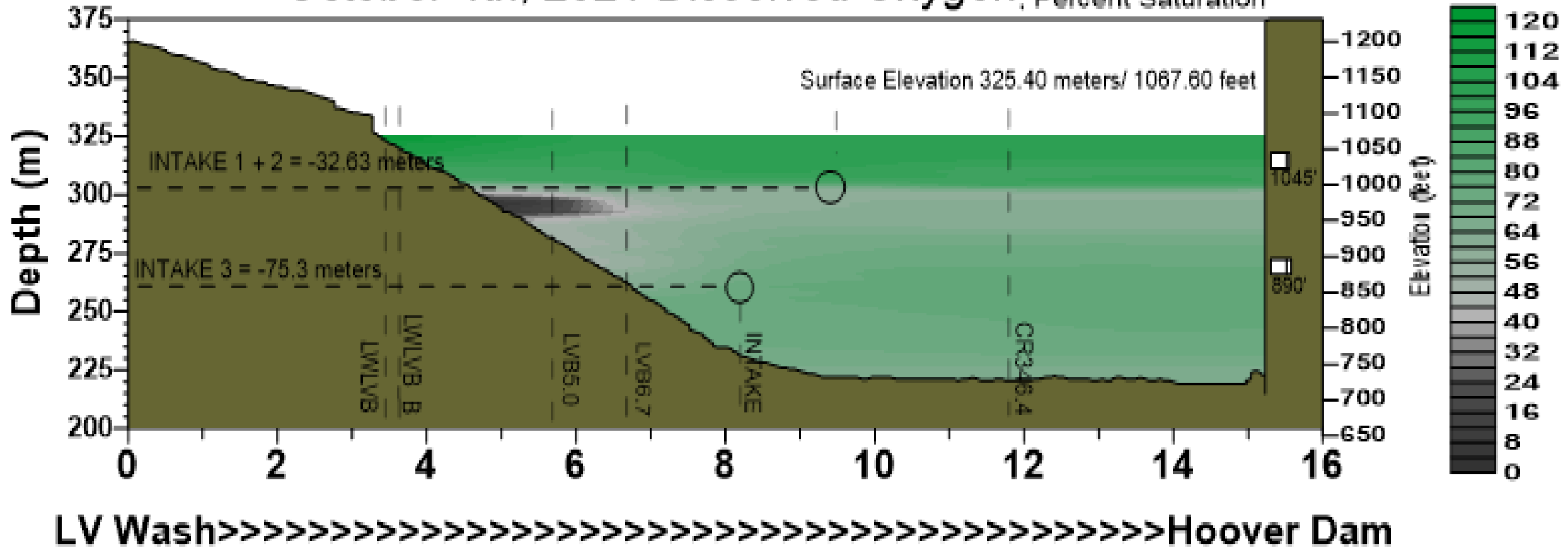
Lake Mead Conductance

October 4th, 2021 Specific Conductance



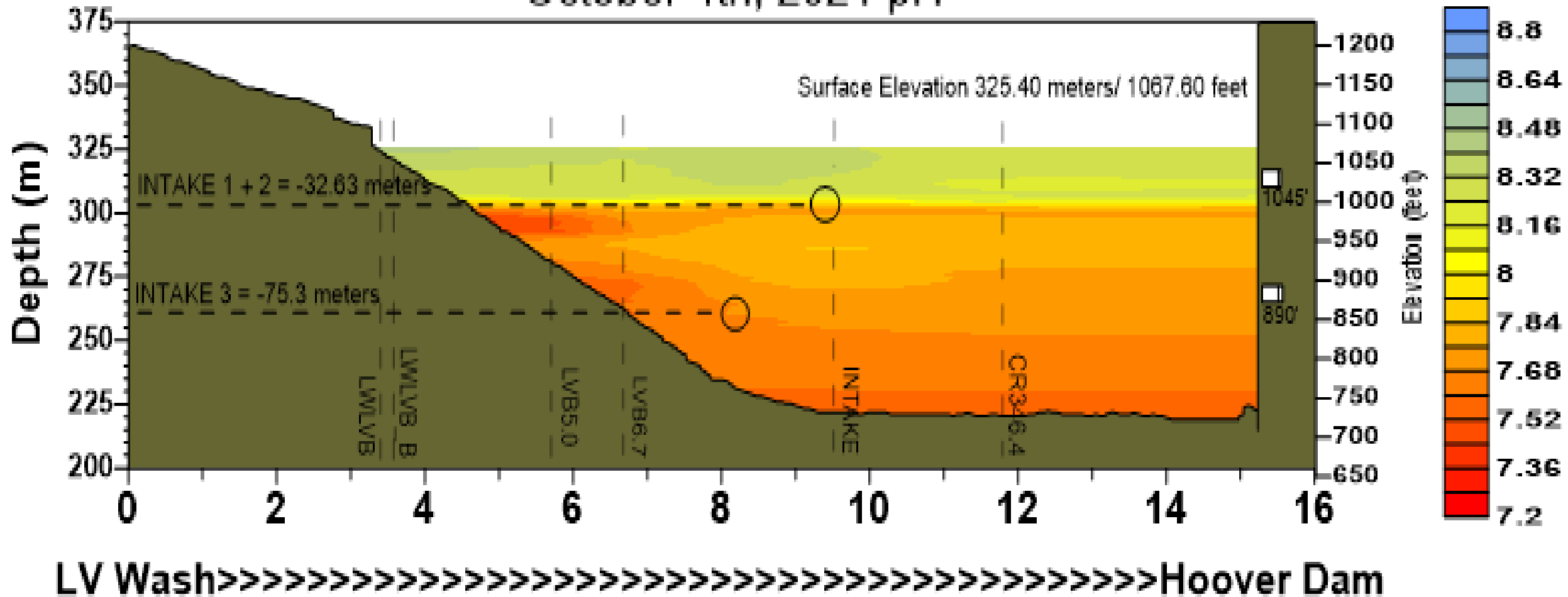
Lake Mead Dissolved Oxygen

October 4th, 2021 Dissolved Oxygen, Percent Saturation

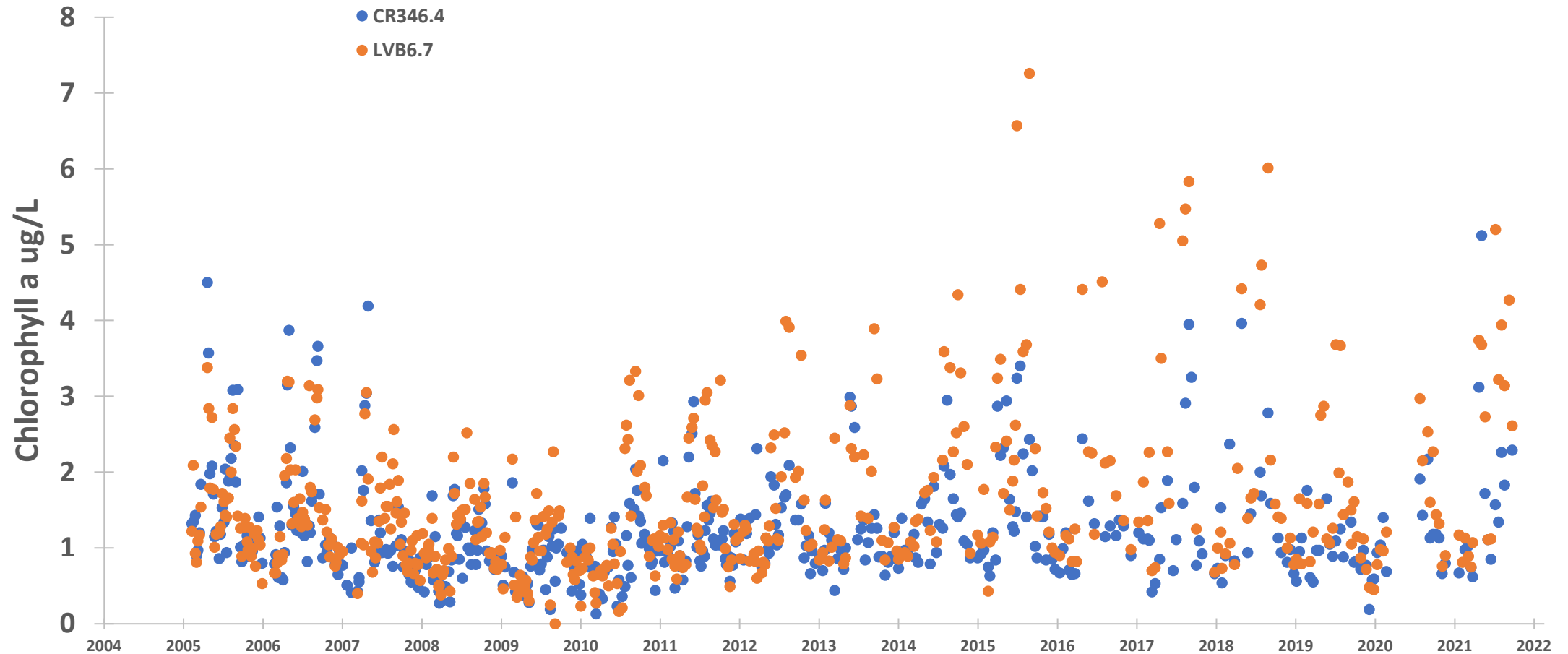


Lake Mead pH

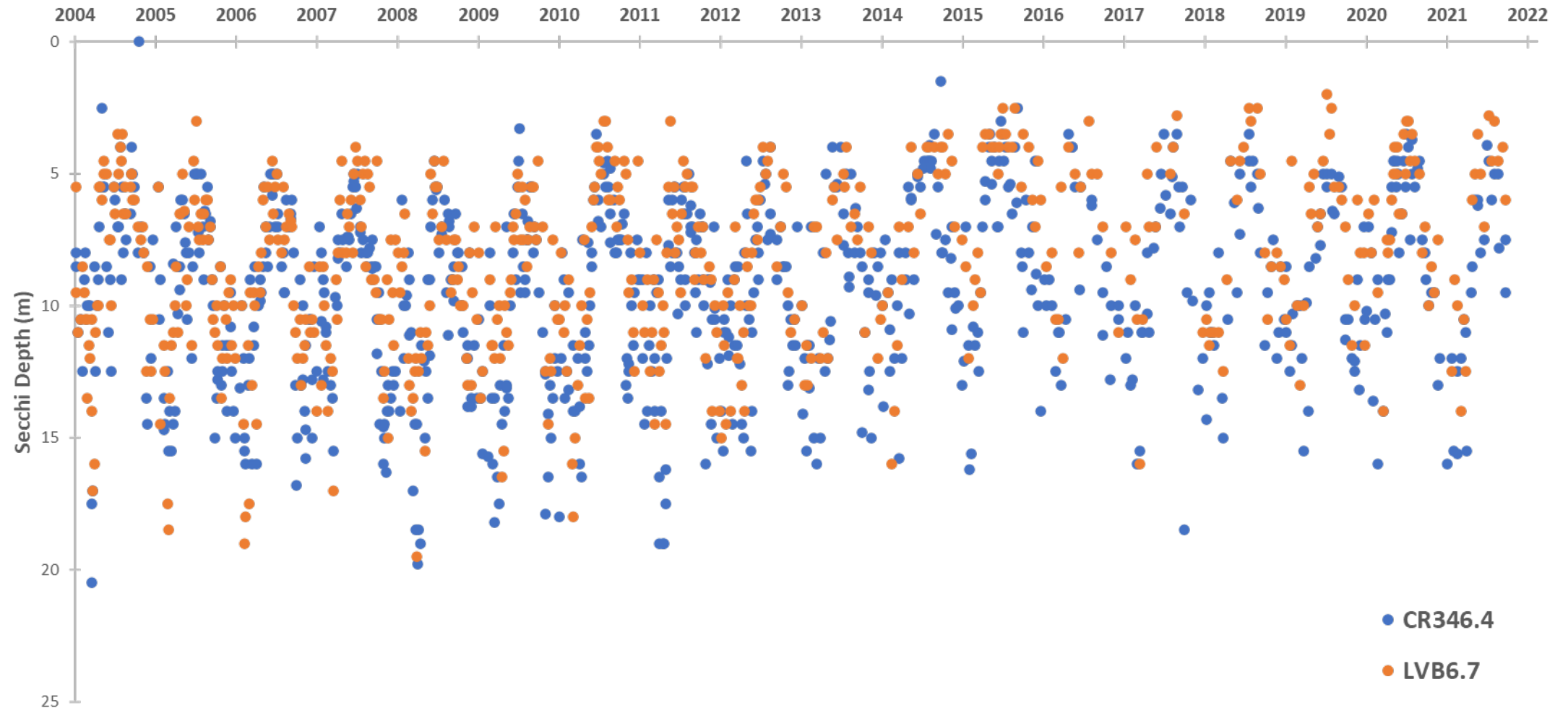
October 4th, 2021 pH



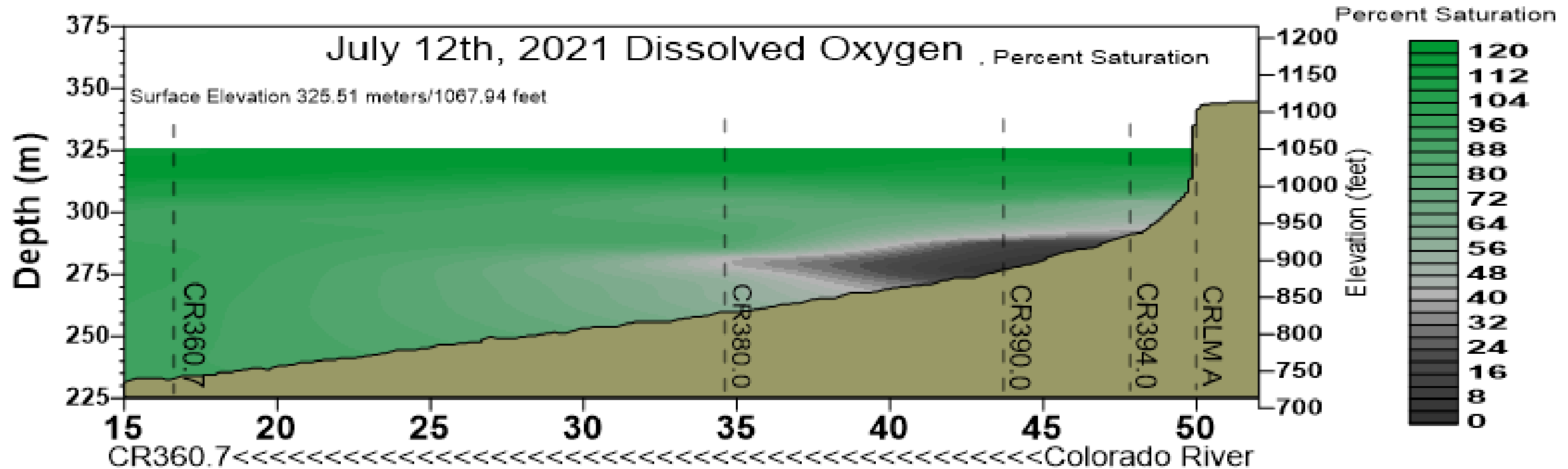
Lake Mead Chlorophyll a



Lake Mead Secchi Depth

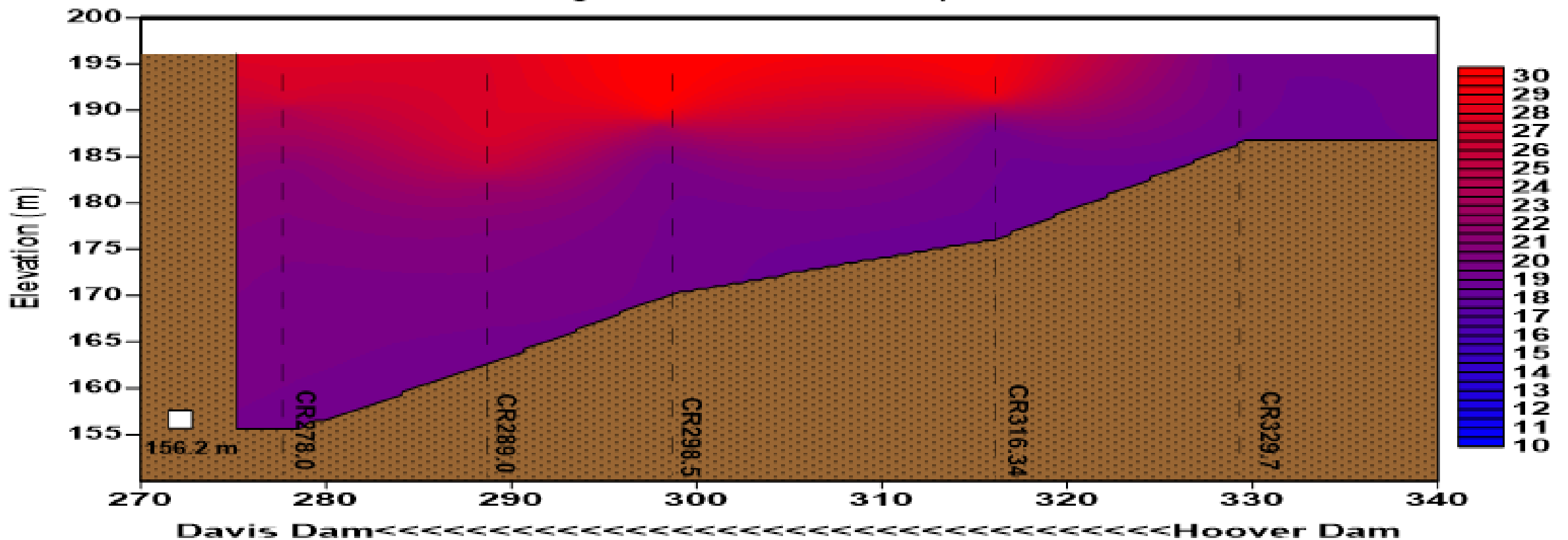


Lake Mead: Colorado Inflow



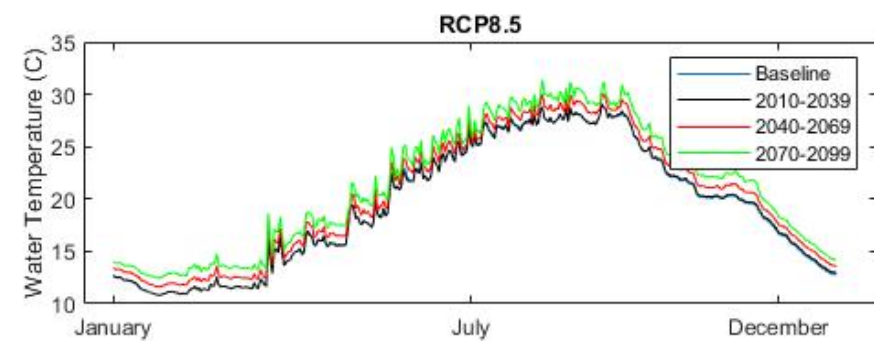
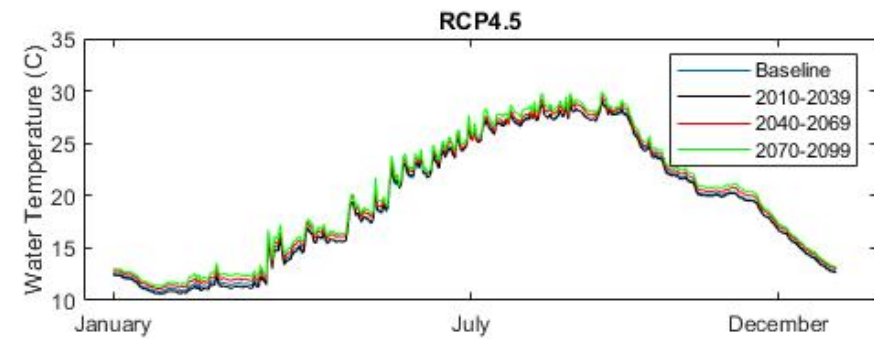
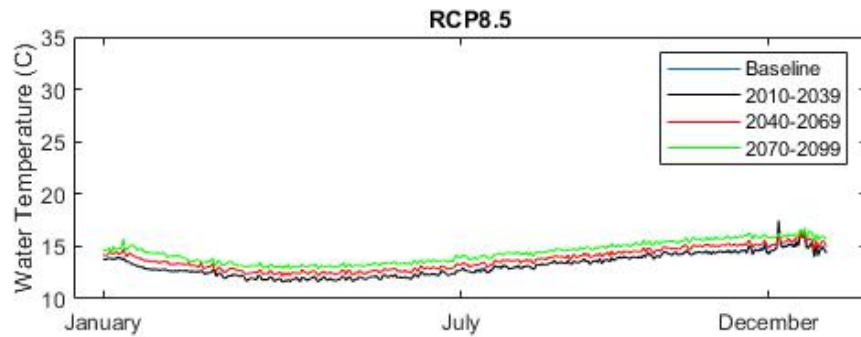
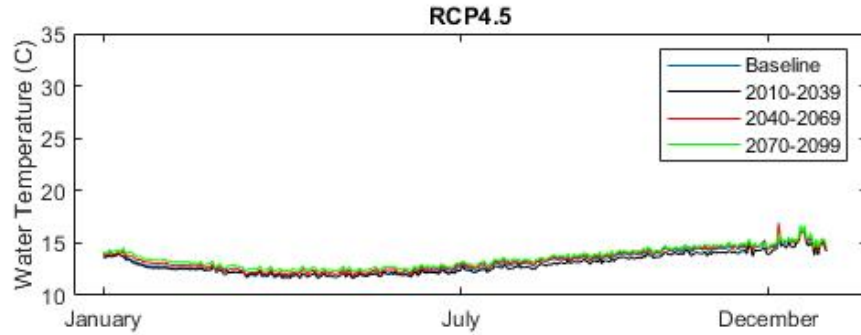
Lake Mohave Temperature

August 19th, 2020 Temperature, °C



Algal Toxins

- Very few, low concentration detections in Lake Mead
 - Late summer months
- Fairly “consistent” detections in Lake Mohave
 - Most low concentrations
 - Most likely the product of aggregation by wind
 - Most in mid lake locations
 - Most recent detection was high
- This is an emerging problem that will need to be monitored



Model Results: Water Temperature

- 1100 ft WSEL (left); 900 ft WSEL (right)
- RCP8.5/late-century (2070-2099) scenario produces the most warming at L3PS
- Strong seasonal changes at 900 ft WSEL due to location of intake near surface

Questions?

- Todd.Tietjen@snwa.com

Las Vegas Valley Watershed Advisory Committee (LVVWAC) Update



October 26, 2021

LVVWAC Update:

October 19, 2021 Meeting



Received update on Las Vegas Wash Coordination Committee logo

Received update on the Clark County Wetlands Park

- ❧ The Nature Center is open Tuesday – Sunday; programs, field trips and events in full swing
- ❧ The Nature Play Corner is under construction and will be completed in winter 2022; will include interpretive signage and wayfinding
- ❧ Land management activities to include fencing and barriers, signage and loop trail completion
- ❧ Coordination with CC Public Works on several zoning projects
- ❧ Working with CCWRD on a sewer line extension

LVVWAC Update:

October 19, 2021 Meeting



Received update on the Clark County Advisory Board to Manage Wildlife's recommendation to open the Wetlands Park for fishing

- ❧ Tour of Wetlands Park was given to the Advisory Board in August; participants included CCWRD, SNWA, CC Park Police, CC Parks & Recreation and Wetlands Park
- ❧ NDEP: Non-contact designation
- ❧ NDOW: Closed to fishing
- ❧ Letters of opposition: Clark County, CCWRD, City of Henderson, City of Las Vegas and City of North Las Vegas
- ❧ LVVWAC unanimously approved its letter of opposition

LVVWAC Update:

October 19, 2021 Meeting



Received update on regional water quality

- ❧ Considering drought, water quality remains high in Lake Mead and Lake Mohave
- ❧ Short residence time benefits water quality in Lake Mead
- ❧ Modeling of Lake Mead is becoming more important considering nearer term conditions in the lake
- ❧ Low concentration of algal toxins found in Lake Mead; more consistent detections found in Lake Mohave (emerging problem that will need to be monitored)

Next Meeting



January 11, 2022

2 p.m.

Location: TBD